

Anti-Enolase antibody

Catalog: PHY0649

Product Information

Description:	Rabbit polyclonal antibody
Background:	Enolases are key glycolytic enzymes that are highly conserved in prokaryotic and eukaryotic organisms and are among the most abundant cytosolic proteins.
Synonyms:	Enolase, ENO2, ENOLASE 2, LOS2, LOW EXPRESSION OF OSMOTICALLY RESPONSIVE GENES 2
Immunogen:	KLH-conjugated synthetic peptide of Enolase derived from <i>Arabidopsis thaliana</i> AT2G36530.
Form:	Lyophilized
Quantity:	150 µg
Purification:	Protein A purified
Reconstitution:	Reconstitution with 150µl of 0.01M sterile PBS. "Note: please spin tube briefly prior to opening it to avoid any losses that might occur from lyophilized material adhering to the cap or sides of the tube".
Stability & Storage:	Use a manual defrost freezer and avoid repeated freeze-thaw cycles. 12 months from date of receipt, -20 to -70°C as supplied. 6 months, -20 to -70°C under sterile conditions after reconstitution. 1 month, 2 to 8°C under sterile conditions after reconstitution.
Shipping:	The product is shipped at 4°C. Upon receipt, store it immediately at the temperature recommended above.

Application Information

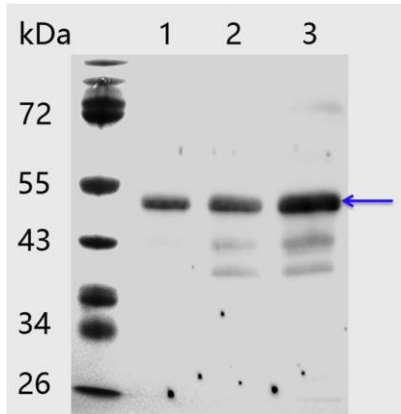
Recommended Dilution:	Western Blot (1:1000-1:2000) Note: Optimal dilutions/concentrations should be determined by the end user.
Expected/apparent MW:	48 kDa
Confirmed Reactivity:	<i>Arabidopsis thaliana</i>
Predicted Reactivity:	Among 25 analyzed species, the sequence of the synthetic peptide used for immunization is 100% homologues with the sequence in <i>Oryza sativa Japonica Group</i> , <i>Zea mays</i> , <i>Triticum aestivum</i> , <i>Solanum lycopersicum</i> , <i>Brassica rapa subsp. Oleifera</i> , <i>Brassica napus</i> ,

Research Use Only

Spinacia oleracea, and 80-99% homologues with the sequence in *Glycine max*.

For more species homologues information, please contact tech support at tech@phytoab.com.

Application Example



PHY0649

Lane 1: 10 µg total protein from *Arabidopsis thaliana* leaf.

Lane 2: 25 µg total protein from *Arabidopsis thaliana* leaf.

Lane 3: 50 µg total protein from *Arabidopsis thaliana* leaf.

Electrophoresis: 12.5% SDS-Urea-PAGE

Transfer: blotting to NC (nitrocellulose) membrane for 1 h.

Blocking: 5% skim milk at RT or 4°C for 1 h.

Primary antibody: 1:2000 dilution overnight at 4°C.

Secondary antibody: 1:20000 dilution using Goat Anti-Rabbit IgG H&L (HRP) (Cat# PHY6000).

Detection: using chemiluminescence substrate and image were captured with CCD camera.