

Anti-Phenylalanine ammonia-lyase 1/2/4 antibody

Catalog: PHY2190A

Product Information

Description:	Rabbit polyclonal antibody
Background:	Phenylalanine ammonia-lyase (PAL) is a key enzyme of plant metabolism catalyzing the first reaction in the biosynthesis from L-phenylalanine of a wide variety of natural products based on the phenylpropane skeleton. <i>Arabidopsis</i> has four PALs: AT2G37040 (PAL1), AT3G53260 (PAL2), AT5G04230 (PAL3) and AT3G10340 (PAL4).
Synonyms:	PAL1/2/4
Immunogen:	KLH-conjugated synthetic peptide (15 aa from Central section) derived from <i>Arabidopsis thaliana</i> PAL1 (AT2G37040), PAL2 (AT3G53260), PAL4 (AT3G10340).
Form:	Lyophilized
Quantity:	150 µg
Purification:	Immunogen affinity purified
Reconstitution:	Reconstitution with 150 µl of 0.01 M sterile PBS. "Note: please spin tube briefly prior to opening it to avoid any losses that might occur from lyophilized material adhering to the cap or sides of the tube".
Stability & Storage:	Use a manual defrost freezer and avoid repeated freeze-thaw cycles. 12 months from date of receipt, -20 to -70°C as supplied. 6 months, -20 to -70°C under sterile conditions after reconstitution. 1 month, 2 to 8°C under sterile conditions after reconstitution.
Shipping:	The product is shipped at 4°C. Upon receipt, store it immediately at the temperature recommended above.

Application Information

Recommended Dilution:	Western Blot (1:1000-1:2000) Note: Optimal dilutions/concentrations should be determined by the end user.
Expected / apparent MW:	79 kDa (AT2G37040), 78 kDa (AT3G53260), 77 kDa (AT3G10340)
Confirmed Reactivity:	<i>Arabidopsis thaliana</i>

Research Use Only

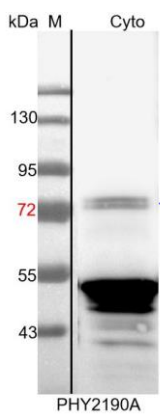
Predicted Reactivity:

Among species analyzed, the sequence of the synthetic peptide used for immunization is 100% homologues with the sequence in *Brassica napus*, *Brassica rapa*, *Medicago truncatula*, *Solanum tuberosum*, *Vitis vinifera*, *Gossypium raimondii*, *Solanum lycopersicum*, *Nicotiana tabacum*, *Populus trichocarpa*, *Cucumis sativus*.

The sequence of the synthetic peptide used for immunization is 93% homologues with the sequence in PAL3 (AT5G04230).

For more species homologues information, please contact tech support at tech@phytoab.com.

Application Example



Cyto: 10 µg cytosolic protein from *Arabidopsis thaliana*.

Electrophoresis: 10% SDS-PAGE

Transfer: blotting to NC (nitrocellulose) membrane for 1 h.

Blocking: 5% skim milk at RT or 4°C for 1 h.

Primary antibody: 1:1000 dilution overnight at 4°C.

Secondary antibody: 1:10000 dilution using Goat Anti-Rabbit IgG H&L (HRP) (Cat# PHY6000).

Detection: using chemiluminescence substrate and image were captured with CCD camera.