

Anti-Mannose-1-phosphate guanylyltransferase 1 antibody

Catalog: PHY1743S

Product Information

Description:	Rabbit polyclonal antibody
Background:	CYT1 provides GDP-mannose, which is used for cell wall carbohydrate biosynthesis and protein glycosylation as well as for ascorbate (vitamin C) biosynthesis.
Synonyms:	CYT1, CYTOKINESIS DEFECTIVE 1, EMB101, EMBRYO DEFECTIVE 101, GDP-MANNOSE PYROPHOSPHORYLASE 1, GMP1, SENSITIVE TO OZONE 1, SOZ1, VITAMIN C DEFECTIVE 1, VTC1
Immunogen:	Recombinant protein of CYT1 (1-361 aa) derived from <i>Arabidopsis thaliana</i> AT2G39770.
Form:	Lyophilized
Quantity:	150 µg
Purification:	Serum
Reconstitution:	Reconstitution with 150 µl of sterile water. "Note: please spin tube briefly prior to opening it to avoid any losses that might occur from lyophilized material adhering to the cap or sides of the tube".
Stability & Storage:	Use a manual defrost freezer and avoid repeated freeze-thaw cycles. 12 months from date of receipt, -20 to -70°C as supplied. 6 months, -20 to -70°C under sterile conditions after reconstitution. 1 month, 2 to 8°C under sterile conditions after reconstitution.
Shipping:	The product is shipped at 4°C. Upon receipt, store it immediately at the temperature recommended above.

Application Information

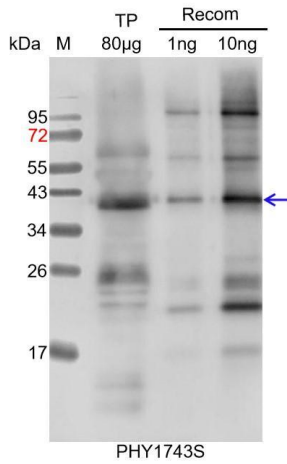
Recommended Dilution:	Western Blot (1:1000-1:2000) Note: Optimal dilutions/concentrations should be determined by the end user.
Expected / apparent MW:	40 / 42 kDa
Confirmed Reactivity:	<i>Arabidopsis thaliana</i>

Research Use Only

Predicted Reactivity:

For more species homologues information, please contact tech support at tech@phytoab.com.

Application Example



TP: 80 µg total protein from *Arabidopsis thaliana* leaf.

Recom: 1 ng and 10 ng recombinant protein containing the peptide for immunization and having a molecular mass of 42 kDa.

Electrophoresis: 15% SDS-PAGE

Transfer: blotting to NC (nitrocellulose) membrane for 1 h.

Blocking: 5% skim milk at RT or 4°C for 1 h.

Primary antibody: 1:1000 dilution overnight at 4°C.

Secondary antibody: 1:10000 dilution using Goat Anti-Rabbit IgG H&L (HRP) (Cat# PHY6000)

Detection: using chemiluminescence substrate and image were captured with CCD camera.