

# Anti-Cell division protein FtsY homolog, chloroplastic antibody

Catalog: PHY0442A

## Product Information

<b>Description:</b>	Rabbit polyclonal antibody
<b>Background:</b>	CPFTSY is a homolog of the $\alpha$ -subunit of mammalian signal recognition particle (SRP) receptor, and is essential for protein translocation and vegetative cell growth.
<b>Synonyms:</b>	CPFTSY
<b>Immunogen:</b>	KLH-conjugated synthetic peptide (15 aa from central section) derived from <i>Arabidopsis thaliana</i> CPFTSY (AT2G45770).
<b>Form:</b>	Lyophilized
<b>Quantity:</b>	150 $\mu$ g
<b>Purification:</b>	Immunogen affinity purified
<b>Reconstitution:</b>	Reconstitution with 150 $\mu$ l of 0.01 M sterile PBS. "Note: please spin tube briefly prior to opening it to avoid any losses that might occur from lyophilized material adhering to the cap or sides of the tube".
<b>Stability &amp; Storage:</b>	Use a manual defrost freezer and avoid repeated freeze-thaw cycles. 12 months from date of receipt, -20 to -70°C as supplied. 6 months, -20 to -70°C under sterile conditions after reconstitution. 1 month, 2 to 8°C under sterile conditions after reconstitution.
<b>Shipping:</b>	The product is shipped at 4°C. Upon receipt, store it immediately at the temperature recommended above.

## Application Information

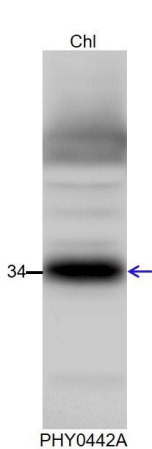
<b>Recommended Dilution:</b>	Western Blot (1:100-1:500) Note: Optimal dilutions/concentrations should be determined by the end user.
<b>Expected / apparent MW:</b>	40 / 34 kDa
<b>Confirmed Reactivity:</b>	<i>Arabidopsis thaliana</i>
<b>Predicted Reactivity:</b>	Among species analyzed, the sequence of the synthetic peptide used for immunization is 100% homologous with the sequence in <i>Brassica rapa</i> , <i>Brassica napus</i> , <i>Spinacia oleracea</i> , <i>Setaria viridis</i> , <i>Panicum</i>

Research Use Only

*virgatum*, *Hordeum vulgare subsp. vulgare*, and 80-99% homologues with the sequence in *Nicotiana tabacum*, *Solanum tuberosum*, *Solanum lycopersicum*, *Zea mays*, *Gossypium raimondii*, *Glycine max*, *Medicago truncatula*, *Sorghum bicolor*, *Populus trichocarpa*, *Oryza sativa Japonica Group*, *Triticum aestivum*, *Physcomitrium patens*, *Cucumis sativus*, *Vitis vinifera*.

For more species homologues information, please contact tech support at [tech@phytoab.com](mailto:tech@phytoab.com).

## Application Example



Chl: 80 µg total chloroplast protein from *Arabidopsis thaliana*.

**Electrophoresis:** 15% SDS-PAGE

**Transfer:** blotting to NC (nitrocellulose) membrane for 1 h.

**Blocking:** 5% skim milk at RT or 4°C for 1 h.

**Primary antibody:** 1:500 dilution overnight at 4°C.

**Secondary antibody:** 1:10000 dilution using Goat Anti-Rabbit IgG H&L(HRP) (Cat# PHY6000).

**Detection:** using chemiluminescence substrate and image were captured with CCD camera.