

# Anti-UDP-glucose pyrophosphorylase antibody

Catalog: PHY0077S

## Product Information

<b>Description:</b>	Rabbit polyclonal antibody
<b>Background:</b>	UDP-glucose pyrophosphorylase (UGPase) is an ubiquitous enzyme found in plants, animals and bacteria, and produces UDP-glucose which is the major glycosyl donor for polysaccharides in all organisms (e.g. needed for sucrose synthesis, but also for cellulose and callose formation, and as a precursor to other nucleotide-sugars).
<b>Synonyms:</b>	UGPase, ATUGP1, UGP, UGP1, UDP-GLUCOSE PYROPHOSPHORYLASE, UDP-GLUCOSE PYROPHOSPHORYLASE 1
<b>Immunogen:</b>	KLH-conjugated synthetic peptide (15 aa from C terminal section) derived from <i>Arabidopsis thaliana</i> UGPase (AT3G03250).
<b>Form:</b>	Lyophilized
<b>Quantity:</b>	150 µg
<b>Purification:</b>	Serum Peptide affinity form antibody available upon request at <a href="mailto:info@phytoab.com">info@phytoab.com</a> .
<b>Reconstitution:</b>	Reconstitution with 150 µl of sterile water. "Note: please spin tube briefly prior to opening it to avoid any losses that might occur from lyophilized material adhering to the cap or sides of the tube".
<b>Stability &amp;Storage:</b>	Use a manual defrost freezer and avoid repeated freeze-thaw cycles. 12 months from date of receipt, -20 to -70°C as supplied. 6 months, -20 to -70°C under sterile conditions after reconstitution. 1 month, 2 to 8°C under sterile conditions after reconstitution.
<b>Shipping:</b>	The product is shipped at 4°C. Upon receipt, store it immediately at the temperature recommended above.

## Application Information

<b>Recommended Dilution:</b>	Western Blot (1:1000-1:2000) Note: Optimal dilutions/concentrations should be determined by the end user.
<b>Expected / apparent MW:</b>	52 / 50 kDa

Research Use Only

**Confirmed Reactivity:**

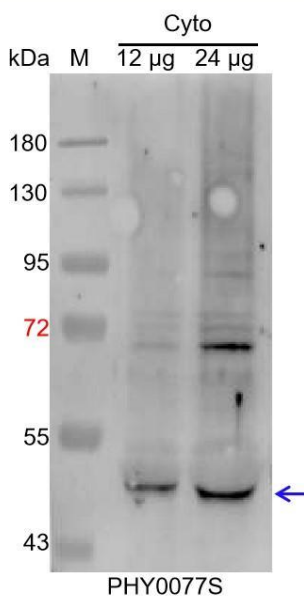
*Arabidopsis thaliana*

**Predicted Reactivity:**

Among species analyzed, the sequence of the synthetic peptide used for immunization is 80-99% homologues with the sequence in *Zea mays*, *Hordeum vulgare*, *Brassica rapa*, *Brassica napus*, *Panicum virgatum*, *Oryza sativa*, *Triticum aestivum*, *Setaria viridis*, *Sorghum bicolor*, *Nicotiana tabacum*, *Glycine max*, *Populus trichocarpa*, *Solanum tuberosum*, *Solanum lycopersicum*.

For more species homologues information, please contact tech support at [tech@phytoab.com](mailto:tech@phytoab.com).

## Application Example



Cyto: 12 µg and 24 µg cytosolic protein from *Arabidopsis thaliana*, respectively.

**Electrophoresis:** 15% SDS-PAGE

**Transfer:** blotting to NC (nitrocellulose) membrane for 1 h.

**Blocking:** 5% skim milk at RT or 4°C for 1 h.

**Primary antibody:** 1:2000 dilution overnight at 4°C.

**Secondary antibody:** 1:10000 dilution using Goat Anti-Rabbit IgG H&L (HRP) (Cat# PHY6000)

**Detection:** using chemiluminescence substrate and image were captured with CCD camera.