

Anti-Delta-1-pyrroline-5-carboxylate synthase A antibody

Catalog: PHY2123S

Product Information

Description:	Rabbit polyclonal antibody
Background:	Proline accumulation is one of the sensitive metabolic responses to extreme conditions; it is triggered by salinity or drought and is regulated by light. P5CS1 (AT2G39800) and PDH1 (AT3G30775) is essential for salt-induced proline accumulation. They control proline biosynthetic and catabolic pathways, respectively.
Synonyms:	P5CSA, ATP5CS, DELTA1-PYRROLINE-5-CARBOXYLATE SYNTHASE 1, P5CS1
Immunogen:	KLH-conjugated synthetic peptide (16 aa from N terminal section) derived from <i>Arabidopsis thaliana</i> P5CSA (AT2G39800).
Form:	Lyophilized
Quantity:	150 µg
Purification:	Serum Peptide affinity form antibody available upon request at info@phytoab.com .
Reconstitution:	Reconstitution with 150 µl of sterile water. "Note: please spin tube briefly prior to opening it to avoid any losses that might occur from lyophilized material adhering to the cap or sides of the tube".
Stability & Storage:	Use a manual defrost freezer and avoid repeated freeze-thaw cycles. 12 months from date of receipt, -20 to -70°C as supplied. 6 months, -20 to -70°C under sterile conditions after reconstitution. 1 month, 2 to 8°C under sterile conditions after reconstitution.
Shipping:	The product is shipped at 4°C. Upon receipt, store it immediately at the temperature recommended above.

Application Information

Recommended Dilution:	Western Blot (1:1000-1:2000) Note: Optimal dilutions/concentrations should be determined by the end user.
Expected / apparent MW:	78 kDa

Research Use Only

Confirmed Reactivity:

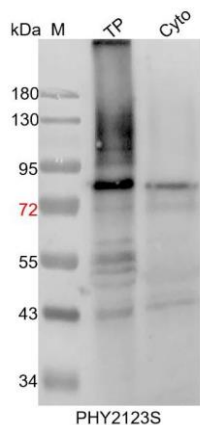
Arabidopsis thaliana

Predicted Reactivity:

Among species analyzed, the sequence of the synthetic peptide used for immunization is 100% homologues with the sequence in *Brassica napus*, *Brassica rapa*, and 80-99% homologues with the sequence in *Triticum aestivum*, *Oryza sativa*, *Sorghum bicolor*, *Hordeum vulgare*, *Solanum tuberosum*, *Solanum lycopersicum*, *Gossypium raimondii*, *Populus trichocarpa*, *Zea mays*, *Nicotiana tabacum*, *Panicum virgatum*, *Setaria viridis*, *Leymus chinensis*.

For more species homologues information, please contact tech support at tech@phytoab.com.

Application Example



TP: 18 µg total protein from *Arabidopsis thaliana* leaf.

Cyto: 10 µg cytosolic protein from *Arabidopsis thaliana* leaf.

Electrophoresis: 10% SDS-PAGE

Transfer: blotting to NC (nitrocellulose) membrane for 1 h.

Blocking: 5% skim milk at RT or 4°C for 1 h.

Primary antibody: 1:1000 dilution overnight at 4°C.

Secondary antibody: 1:10000 dilution using Goat Anti-Rabbit IgG H&L(HRP) (Cat# PHY6000).

Detection: using chemiluminescence substrate and image were captured with CCD camera.