

Anti-Plant fts metallo-protease H2/6/8 antibody

Catalog: PHY1385S

Product Information

Description:	Rabbit polyclonal antibody
Background:	FtsH6 is an FtsH protease that is localized to the chloroplast. AtFtsH6 is involved in the degradation of both Lhcb3 and Lhcb1 during senescence and high-light acclimation.
Synonyms:	FtsH2/6/8, ATP-dependent zinc metalloprotease FTSH2/6/8, chloroplastic, AtFTSH2/6/8
Immunogen:	KLH-conjugated synthetic peptide (15 aa from N terminal section) derived from <i>Arabidopsis thaliana</i> FtsH2 (AT2G30950), FtsH6 (AT5G15250) and FtsH8 (AT1G06430).
Form:	Lyophilized
Quantity:	150 µg
Purification:	Serum
Reconstitution:	Peptide affinity form antibody available upon request at info@phytoab.com . Reconstitution with 150 µl of sterile water. "Note: please spin tube briefly prior to opening it to avoid any losses that might occur from lyophilized material adhering to the cap or sides of the tube".
Stability & Storage:	Use a manual defrost freezer and avoid repeated freeze-thaw cycles. 12 months from date of receipt, -20 to -70°C as supplied. 6 months, -20 to -70°C under sterile conditions after reconstitution. 1 month, 2 to 8°C under sterile conditions after reconstitution.
Shipping:	The product is shipped at 4°C. Upon receipt, store it immediately at the temperature recommended above.

Application Information

Recommended Dilution:	Western Blot (1:1000-1:2000) Note: Optimal dilutions/concentrations should be determined by the end user.
Expected / apparent MW:	74 / 66 kDa (AT2G30950), 56 kDa (AT5G15250), 73 / 66 kDa (AT1G06430)
Confirmed Reactivity:	<i>Arabidopsis thaliana</i>

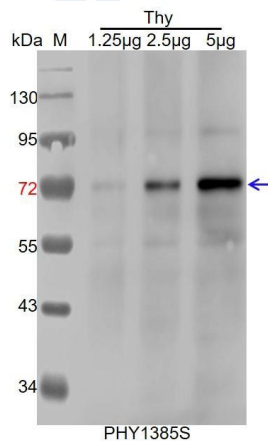
Research Use Only

Predicted Reactivity:

Among species analyzed, the sequence of the synthetic peptide used for immunization is 100% homologues with the sequence in *Brassica rapa*, *Populus trichocarpa*, *Vitis vinifera*, *Gossypium raimondii*, *Medicago truncatula*, *Brassica napus*, *Glycine max*, *Physcomitrium patens*, *Cucumis sativus*, *Setaria viridis*, *Solanum tuberosum*, *Solanum lycopersicum*, *Nicotiana tabacum*, *Zea mays*, *Panicum virgatum*, *Sorghum bicolor*, *Triticum aestivum*, *Hordeum vulgare*, *Spinacia oleracea*, *Oryza sativa*, and 80-99% homologues with the sequence in *Synechococcus elongatus* PCC 7942, *Synechocystis* sp. PCC 6803, *Chlamydomonas reinhardtii*.

For more species homologues information, please contact tech support at tech@phytoab.com.

Application Example



Thy: thylakoid membrane protein from *Arabidopsis thaliana* containing 1.25 µg, 2.5 µg, and 5 µg of chlorophyll, respectively.

Electrophoresis: 10% SDS-Urea-PAGE

Transfer: blotting to NC (nitrocellulose) membrane for 1 h.

Blocking: 5% skim milk at RT or 4°C for 1 h.

Primary antibody: 1:1000 dilution overnight at 4°C.

Secondary antibody: 1:10000 dilution using Goat Anti-Rabbit IgG H&L (HRP) (Cat# PHY6000).

Detection: using chemiluminescence substrate and image were captured with CCD camera.