

Anti-Non-symbiotic hemoglobin 2 antibody

Catalog: PHY1550A

Product Information

Description:	Rabbit polyclonal antibody
Background:	Different classes of nonsymbiotic plant hemoglobins have been identified and divided into class 1 (Hb1) (AT2G16060) and class 2 (Hb2) based on phylogenetic characteristics, gene expression patterns, and oxygen-binding properties. Hb2 might act as an oxygen sensor or play a role in electron transfer, possibly to a bound oxygen molecule.
Synonyms:	Ahb2, ARABIDOPSIS HEMOGLOBIN 2, ARATH GLB2, ATGLB2, GLB2, HAEMOGLOBIN 2, HB2, HEMOGLOBIN 2, NON-SYMBIOTIC HAEMOGLOBIN 2, NSHB2, PGB2, PHYTOGLOBIN2
Immunogen:	KLH-conjugated synthetic peptide (15 aa from C terminal section) derived from <i>Arabidopsis thaliana</i> Ahb2 (AT3G10520).
Form:	Lyophilized
Quantity:	150 µg
Purification:	Immunogen affinity purified
Reconstitution:	Reconstitution with 150 µl of 0.01 M sterile PBS. "Note: please spin tube briefly prior to opening it to avoid any losses that might occur from lyophilized material adhering to the cap or sides of the tube".
Stability &Storage:	Use a manual defrost freezer and avoid repeated freeze-thaw cycles. 12 months from date of receipt, -20 to -70°C as supplied. 6 months, -20 to -70°C under sterile conditions after reconstitution. 1 month, 2 to 8°C under sterile conditions after reconstitution.
Shipping:	The product is shipped at 4°C. Upon receipt, store it immediately at the temperature recommended above.

Application Information

Recommended Dilution:	Western Blot (1:1000-1:2000) Note: Optimal dilutions/concentrations should be determined by the end user.
Expected / apparent MW:	18 kDa

Research Use Only

Confirmed Reactivity:

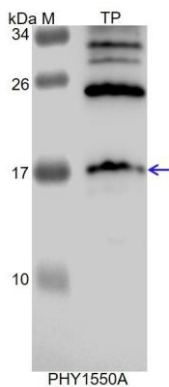
Arabidopsis thaliana

Predicted Reactivity:

Among species analyzed, the sequence of the synthetic peptide used for immunization is 100% homologues with the sequence in *Brassica napus*, *Brassica rapa*.

For more species homologues information, please contact tech support at tech@phytoab.com.

Application Example



TP: 20 µg total protein from *Arabidopsis thaliana*.

Electrophoresis: 15% SDS-PAGE

Transfer: blotting to NC (nitrocellulose) membrane for 1 h.

Blocking: 5% skim milk at RT or 4°C for 1 h.

Primary antibody: 1:2000 dilution overnight at 4°C.

Secondary antibody: 1:10000 dilution using Goat Anti-Rabbit IgG H&L(HRP) (Cat# PHY6000).

Detection: using chemiluminescence substrate and image were captured with CCD camera.