

Anti-Protein TRIGALACTOSYLDIACYLGLYCEROL 2, chloroplastic antibody

Catalog: PHY2815A

Product Information

Description:	Rabbit polyclonal antibody
Background:	TGD2 is a component of a phosphatidic acid/lipid transport complex in the chloroplast envelope. It specifically binds phosphatidic acid (PA). And it involved in lipid transfer from the endoplasmic reticulum (ER) to plastids, and necessary for thylakoids formation.
Synonyms:	TGD2, ABCI15, ATP-BINDING CASSETTE I15, TRIGALACTOSYLDIACYLGLYCEROL2
Immunogen:	KLH-conjugated synthetic peptide of (15 aa from Central section) derived from <i>Arabidopsis thaliana</i> TGD2 (AT3G20320).
Form:	Lyophilized
Quantity:	150 µg
Purification:	Immunogen affinity purified
Reconstitution:	Reconstitution with 150 µl of 0.01M sterile PBS. "Note: please spin tube briefly prior to opening it to avoid any losses that might occur from lyophilized material adhering to the cap or sides of the tube".
Stability & Storage:	Use a manual defrost freezer and avoid repeated freeze-thaw cycles. 12 months from date of receipt, -20 to -70°C as supplied. 6 months, -20 to -70°C under sterile conditions after reconstitution. 1 month, 2 to 8°C under sterile conditions after reconstitution.
Shipping:	The product is shipped at 4°C. Upon receipt, store it immediately at the temperature recommended above.

Application Information

Recommended Dilution:	Western Blot (1:1000-1:2000) Note: Optimal dilutions/concentrations should be determined by the end user.
Expected / apparent MW:	42 / 36 kDa

Research Use Only

Confirmed Reactivity:

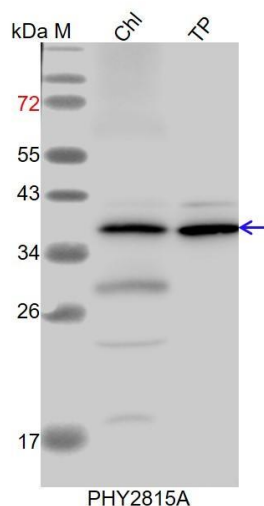
Arabidopsis thaliana

Predicted Reactivity:

Among species analyzed, the sequence of the synthetic peptide used for immunization is 100% homologues with the sequence in *Brassica napus*, *Brassica rapa*, *Glycine max*, *Gossypium raimondii*, and 80-99% homologues with the sequence in *Vitis vinifera*, *Setaria viridis*, *Panicum virgatum*, *Zea mays*, *Sorghum bicolor*, *Solanum lycopersicum*, *Solanum tuberosum*, *Medicago truncatula*, *Populus trichocarpa*, *Nicotiana tabacum*, *Spinacia oleracea*, *Triticum aestivum*, *Hordeum vulgare*, *Cucumis sativus*, *Oryza sativa*.

For more species homologues information, please contact tech support at tech@phytoab.com.

Application Example



Chl: 7.5 µg total chloroplast protein from *Arabidopsis thaliana*.

TP: 15 µg total protein from *Arabidopsis thaliana*.

Electrophoresis: 15% SDS-PAGE

Transfer: blotting to NC (nitrocellulose) membrane for 1 h.

Blocking: 5% skim milk at RT or 4°C for 1 h.

Primary antibody: 1:2000 dilution overnight at 4°C.

Secondary antibody: 1:10000 dilution using Goat Anti-Rabbit IgG H&L(HRP) (Cat# PHY6000).

Detection: using chemiluminescence substrate and image were captured with CCD camera.