

Anti-Aquaporin TIP1-2, C-terminal antibody

Catalog: PHY2189S

Product Information

Description:	Rabbit polyclonal antibody
Background:	TIP1-2 is water channel required to facilitate the transport of water across cell membrane. It may be involved in the osmoregulation in plants under high osmotic stress such as under a high salt condition.
Synonyms:	TIP1-2, GAMMA-TIP2, SALT-STRESS INDUCIBLE TONOPLAST INTRINSIC PROTEIN, SITIP, TIP1;2, TIP2, TONOPLAST INTRINSIC PROTEIN 2
Immunogen:	KLH- conjugated synthetic peptide (14 aa from C terminal section) derived from <i>Arabidopsis thaliana</i> TIP1-2 (AT3G26520).
Form:	Lyophilized
Quantity:	150 µg
Purification:	Serum Peptide affinity form antibody available upon request at info@phytoab.com .
Reconstitution:	Reconstitution with 150 µl of sterile water. "Note: please spin tube briefly prior to opening it to avoid any losses that might occur from lyophilized material adhering to the cap or sides of the tube".
Stability & Storage:	Use a manual defrost freezer and avoid repeated freeze-thaw cycles. 12 months from date of receipt, -20 to -70°C as supplied. 6 months, -20 to -70°C under sterile conditions after reconstitution. 1 month, 2 to 8°C under sterile conditions after reconstitution.
Shipping:	The product is shipped at 4°C. Upon receipt, store it immediately at the temperature recommended above.

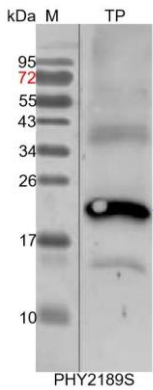
Application Information

Recommended Dilution:	Western Blot (1:1000-1:2000) Note: Optimal dilutions/concentrations should be determined by the end user.
Expected / apparent MW:	26 / 23 kDa
Confirmed Reactivity:	<i>Arabidopsis thaliana</i>
Predicted Reactivity:	For more species homologues information, please contact tech

Research Use Only

support at tech@phytoab.com.

Application Example



TP: 50 µg total protein from *Arabidopsis thaliana*.

Electrophoresis: 15% SDS-PAGE

Transfer: blotting to NC (nitrocellulose) membrane for 1 h.

Blocking: 5% skim milk at RT or 4°C for 1 h.

Primary antibody: 1:1000 dilution overnight at 4°C.

Secondary antibody: 1:10000 dilution using Goat Anti-Rabbit IgG H&L (HRP) (Cat# PHY6000).

Detection: using chemiluminescence substrate and image were captured with CCD camera.