

Anti-Fructose-bisphosphate aldolase 8, cytosolic antibody

Catalog: PHY2192S

Product Information

Description:	Rabbit polyclonal antibody
Background:	Fructose 1,6-biphosphate aldolase (FBA) is aldolase super family protein. It is a key enzyme in plants, which is involved not only in glycolysis and gluconeogenesis in the cytoplasm, but also in the Calvin cycle in plastids. In the current study, eight FBA family genes (AtFBA 1-8) were identified and analyzed in <i>Arabidopsis thaliana</i> : FBA1 (AT2G21330), FBA2 (AT4G38970), FBA3 (AT2G01140), FBA4 (AT5G03690), FBA5 (AT4G26530), FBA6 (AT2G36460), FBA7 (AT4G26520), FBA8 (AT3G52930).
Synonyms:	FBA8, ATFBA8, FRUCTOSE-BISPHOSPHATE ALDOLASE 8
Immunogen:	KLH-conjugated synthetic peptide (14 aa from Central section) derived from <i>Arabidopsis thaliana</i> FBA8 (AT3G52930).
Form:	Lyophilized
Quantity:	150 µg
Purification:	Serum Peptide affinity form antibody available upon request at info@phytoab.com .
Reconstitution:	Reconstitution with 150 µl of sterile water. "Note: please spin tube briefly prior to opening it to avoid any losses that might occur from lyophilized material adhering to the cap or sides of the tube".
Stability & Storage:	Use a manual defrost freezer and avoid repeated freeze-thaw cycles. 12 months from date of receipt, -20 to -70°C as supplied. 6 months, -20 to -70°C under sterile conditions after reconstitution. 1 month, 2 to 8°C under sterile conditions after reconstitution.
Shipping:	The product is shipped at 4°C. Upon receipt, store it immediately at the temperature recommended above.

Application Information

Recommended Dilution:	Western Blot (1:1000-1:2000) Note: Optimal dilutions/concentrations should be determined by the end user.
------------------------------	--

Research Use Only

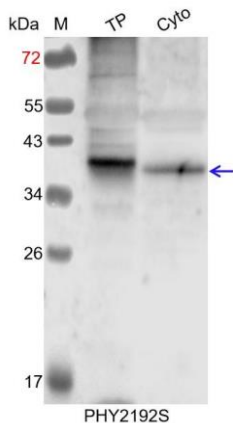
Expected / apparent MW: 39 kDa

Confirmed Reactivity: *Arabidopsis thaliana*

Predicted Reactivity: Among species analyzed, the sequence of the synthetic peptide used for immunization is 100% homologues with the sequence in *Brassica napus*, *Brassica rapa*, and 80-99% homologues with the sequence in *Medicago truncatula*, *Glycine max*.

For more species homologues information, please contact tech support at tech@phytoab.com.

Application Example



TP: 18 µg total protein from *Arabidopsis thaliana*.

Cyto: 10 µg cytosolic protein from *Arabidopsis thaliana*.

Electrophoresis: 15% SDS-PAGE

Transfer: blotting to NC (nitrocellulose) membrane for 1 h.

Blocking: 5% skim milk at RT or 4°C for 1 h.

Primary antibody: 1:1000 dilution overnight at 4°C.

Secondary antibody: 1:10000 dilution using Goat Anti-Rabbit IgG H&L (HRP) (Cat# PHY6000).

Detection: using chemiluminescence substrate and image were captured with CCD camera.