

Anti-Albino or Glassy Yellow 1 antibody

Catalog: PHY2200S

Product Information

Description:	Rabbit polyclonal antibody
Background:	AGY1 is the ATPase subunit of the chloroplast Sec translocation machinery which plays an essential role in chloroplast biogenesis and the regulation of photosynthesis, the absence of which triggers a retrograde signal, eventually leading to a reprogramming of chloroplast and mitochondrial gene expression.
Synonyms:	AGY1, ALBINO OR GLASSY YELLOW 1, ARABIDOPSIS THALIANA CHLOROPLAST SECA, ATPSECA, SECA1
Immunogen:	Recombinant protein of AGY1 (750-1042 aa) derived from <i>Arabidopsis thaliana</i> AT4G01800.
Form:	Lyophilized
Quantity:	150 µg
Purification:	Serum
Reconstitution:	Reconstitution with 150µl of sterile water. "Note: please spin tube briefly prior to opening it to avoid any losses that might occur from lyophilized material adhering to the cap or sides of the tube".
Stability & Storage:	Use a manual defrost freezer and avoid repeated freeze-thaw cycles. 12 months from date of receipt, -20 to -70°C as supplied. 6 months, -20 to -70°C under sterile conditions after reconstitution. 1 month, 2 to 8°C under sterile conditions after reconstitution.
Shipping:	The product is shipped at 4°C. Upon receipt, store it immediately at the temperature recommended above.

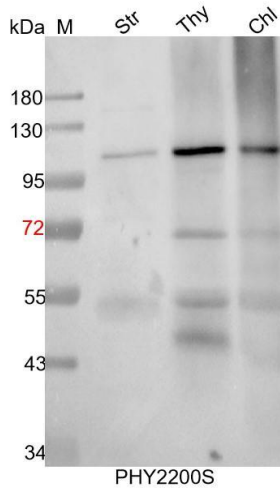
Application Information

Recommended Dilution:	Western Blot (1:1000-1:2000) Note: Optimal dilutions/concentrations should be determined by the end user.
Expected / apparent MW:	117 / 111 kDa
Confirmed Reactivity:	<i>Arabidopsis thaliana</i>
Predicted Reactivity:	For more species homologues information, please contact tech

Research Use Only

support at tech@phytoab.com.

Application Example



Str: 12 μ g stromal protein from *Arabidopsis thaliana*.

Thy: thylakoid membrane protein from *Arabidopsis thaliana* containing 5 μ g of chlorophyll.

Chl: 10 μ l total chloroplast protein from *Arabidopsis thaliana*.

Electrophoresis: 10% SDS-PAGE

Transfer: blotting to NC (nitrocellulose) membrane for 1 h.

Blocking: 5% skim milk at RT or 4°C for 1 h.

Primary antibody: 1:1000 dilution overnight at 4°C.

Secondary antibody: 1:10000 dilution using Goat Anti-Rabbit IgG H&L (HRP) (Cat# PHY6000)

Detection: using chemiluminescence substrate and image were captured with CCD camera.