

# Anti-Cryptochrome-1 antibody

Catalog: PHY1707S

## Product Information

<b>Description:</b>	Rabbit polyclonal antibody
<b>Background:</b>	CRY1 is a flavin-type blue-light photoreceptor with ATP binding and autophosphorylation activity. Photoreceptor activity requires light-induced homodimerisation of the N-terminal CNT1 domains of CRY1. It functions in perception of blue / green ratio of light and is involved in blue-light induced stomatal opening.
<b>Synonyms:</b>	CRY1, ATCRY1, BLU1, BLUE LIGHT UNINHIBITED 1, CRYPTOCHROME 1, ELONGATED HYPOCOTYL 4, HY4, OOP2, OUT OF PHASE 2
<b>Immunogen:</b>	Recombinant protein of CRY1 (471-681 aa) derived from <i>Arabidopsis thaliana</i> AT4G08920.
<b>Form:</b>	Lyophilized
<b>Quantity:</b>	150 µg
<b>Purification:</b>	Serum
<b>Reconstitution:</b>	Reconstitution with 150 µl of sterile water. "Note: please spin tube briefly prior to opening it to avoid any losses that might occur from lyophilized material adhering to the cap or sides of the tube".
<b>Stability &amp; Storage:</b>	Use a manual defrost freezer and avoid repeated freeze-thaw cycles. 12 months from date of receipt, -20 to -70°C as supplied. 6 months, -20 to -70°C under sterile conditions after reconstitution. 1 month, 2 to 8°C under sterile conditions after reconstitution.
<b>Shipping:</b>	The product is shipped at 4°C. Upon receipt, store it immediately at the temperature recommended above.

## Application Information

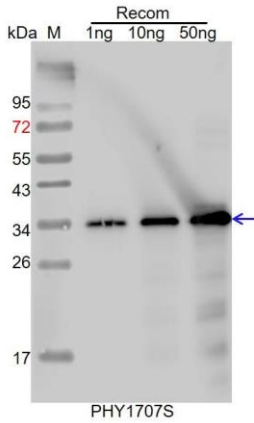
<b>Recommended Dilution:</b>	Western Blot (1:1000-1:2000) Note: Optimal dilutions/concentrations should be determined by the end user.
<b>Expected / apparent MW:</b>	77 kDa
<b>Confirmed Reactivity:</b>	<i>Arabidopsis thaliana</i>

Research Use Only

**Predicted Reactivity:**

For more species homologues information, please contact tech support at [tech@phytoab.com](mailto:tech@phytoab.com).

**Application Example**



Recom: 1 ng, 10 ng and 50 ng recombinant protein containing the peptide for immunization and having a molecular mass of 34 kDa.

**Electrophoresis:** 15% SDS-PAGE

**Transfer:** blotting to NC (nitrocellulose) membrane for 1 h.

**Blocking:** 5% skim milk at RT or 4°C for 1 h.

**Primary antibody:** 1:1000 dilution overnight at 4°C.

**Secondary antibody:** 1:10000 dilution using Goat Anti-Rabbit IgG H&L (HRP) (Cat# PHY6000)

**Detection:** using chemiluminescence substrate and image were captured with CCD camera.