

Anti-Tetraspanin-8 , EC2 domain antibody

Catalog: PHY2750A

Product Information

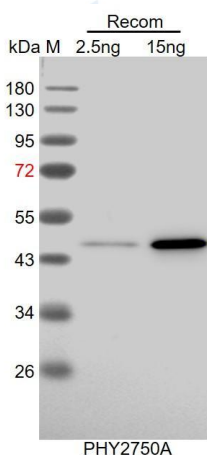
Description:	Rabbit polyclonal antibody
Background:	Tetraspanins are a distinct class of conserved integral proteins. In the Arabidopsis, 17 tetraspanin proteins are identified. They are expressed in different organs/tissues and cell types during embryonic and vegetative development. And the onset of expression coincided with the onset of patterning and cell specification in globular and heart stage embryos (TET1 (AT5G46700), TET3 (AT3G45600), TET4 (AT5G60220), TET5 (AT4G23410), TET8 (AT2G23810), TET10 (AT1G63260), TET13 (AT2G03840), TET14 (AT2G01960), and TET15 (AT5G57810)) and in seedlings at the initiation of the stomatal cell lineage (TET2 (AT2G19580)) or at the asymmetric division in the primary root pericycle upon lateral root initiation (TET13).
Synonyms:	TET8, TETRASPANIN8
Immunogen:	KLH-conjugated synthetic peptide (19 aa from Central section) derived from <i>Arabidopsis thaliana</i> TET8 (AT2G23810).
Form:	Lyophilized
Quantity:	150 µg
Purification:	Immunogen affinity purified
Reconstitution:	Reconstitution with 150 µl of 0.01 M sterile PBS. "Note: please spin tube briefly prior to opening it to avoid any losses that might occur from lyophilized material adhering to the cap or sides of the tube".
Stability &	Use a manual defrost freezer and avoid repeated freeze-thaw cycles.
Storage:	12 months from date of receipt, -20 to -70°C as supplied. 6 months, -20 to -70°C under sterile conditions after reconstitution. 1 month, 2 to 8°C under sterile conditions after reconstitution.
Shipping:	The product is shipped at 4°C. Upon receipt, store it immediately at the temperature recommended above.

Application Information

Research Use Only

Recommended Dilution:	Western Blot (1:1000-1:2000) Note: Optimal dilutions/concentrations should be determined by the end user.
Expected / apparent MW:	31 kDa
Confirmed Reactivity:	Coming soon
Predicted Reactivity:	Among species analyzed, the sequence of the synthetic peptide used for immunization is 80-99% homologues with the sequence in <i>Populus trichocarpa</i> , <i>Cucumis sativus</i> , <i>Vitis vinifera</i> , <i>Gossypium raimondii</i> , <i>Physcomitrium patens</i> , <i>Nicotiana tabacum</i> . For more species homologues information, please contact tech support at tech@phytoab.com .

Application Example



Recom: 2.5 ng and 15 ng recombinant protein containing the peptide for immunization and having a molecular mass of 49 kDa.

Electrophoresis: 12% SDS-PAGE.

Transfer: blotting to NC (nitrocellulose) membrane for 1h.

Blocking: 5% skim milk at RT or 4°C for 1h.

Primary antibody: 1:1000 dilution overnight at 4°C.

Secondary antibody: 1:10000 dilution using Goat Anti-Rabbit IgG H&L (HRP) (Cat# PHY6000).

Detection: using chemiluminescence substrate and image were captured with CCD camera.