

Anti-Thylakoid lumenal 29 kDa protein, chloroplastic antibody

Catalog: PHY1015S

Product Information

Description:	Rabbit polyclonal antibody
Background:	TL29 is one of the more abundant proteins in the thylakoid lumen of plant chloroplasts. Based on its sequence homology to ascorbate peroxidases, TL29 was suggested to be involved in the plant defense system against reactive oxygen species and consequently renamed to APX4.
Synonyms:	TL29, APX4, ASCORBATE PEROXIDASE 4, THYLAKOID LUMEN 29.
Immunogen:	KLH-conjugated synthetic peptide (14 aa from C terminal section) derived from <i>Arabidopsis thaliana</i> TL29 (AT4G09010).
Form:	Lyophilized
Quantity:	150 µg
Purification:	Serum Peptide affinity form antibody available upon request at info@phytoab.com .
Reconstitution:	Reconstitution with 150 µl of sterile water. "Note: please spin tube briefly prior to opening it to avoid any losses that might occur from lyophilized material adhering to the cap or sides of the tube".
Stability & Storage:	Use a manual defrost freezer and avoid repeated freeze-thaw cycles. 12 months from date of receipt, -20 to -70°C as supplied. 6 months, -20 to -70°C under sterile conditions after reconstitution. 1 month, 2 to 8°C under sterile conditions after reconstitution.
Shipping:	The product is shipped at 4°C. Upon receipt, store it immediately at the temperature recommended above.

Application Information

Recommended Dilution:	Western Blot (1:1000-1:2000) Note: Optimal dilutions/concentrations should be determined by the end user.
Expected / apparent MW:	29 kDa
Confirmed Reactivity:	<i>Arabidopsis thaliana</i>

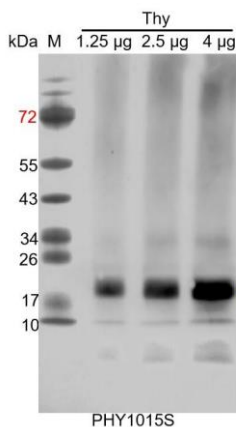
Research Use Only

Predicted Reactivity:

Among species analyzed, the sequence of the synthetic peptide used for immunization is 100% homologues with the sequence in *Vitis vinifera*, *Glycine max*, *Gossypium raimondii*, *Populus trichocarpa*, *Brassica rapa*, *Brassica napus*, *Cucumis sativus*, and 80-99% homologues with the sequence in *Medicago truncatula*, *Nicotiana tabacum*, *Solanum lycopersicum*, *Solanum tuberosum*, *Spinacia oleracea*, *Zea mays*, *Hordeum vulgare*, *Panicum virgatum*, *Sorghum bicolor*, *Triticum aestivum*, *Setaria viridis*, *Oryza sativa*, *Triticum aestivum*, *Physcomitrium patens*.

For more species homologues information, please contact tech support at tech@phytoab.com.

Application Example



Thy: thylakoid membrane protein from *Arabidopsis thaliana* containing 1.25 µg, 2.5 µg and 4 µg of chlorophyll, respectively.

Electrophoresis: 15% SDS-Urea-PAGE

Transfer: blotting to NC (nitrocellulose) membrane for 1 h.

Blocking: 5% skim milk at RT or 4°C for 1 h.

Primary antibody: 1:1000 dilution overnight at 4°C.

Secondary antibody: 1:10000 dilution using Goat Anti-Rabbit IgG H&L (HRP) (Cat# PHY6000)

Detection: using chemiluminescence substrate and image were captured with CCD camera.