

Anti-Floral homeotic protein AGAMOUS antibody

Catalog: PHY1704S

Product Information

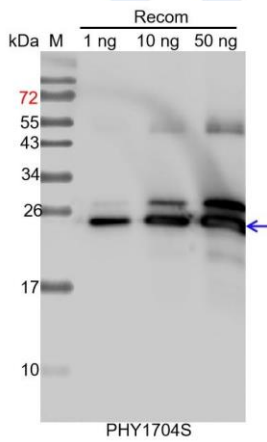
Description:	Rabbit polyclonal antibody
Background:	AGAMOUS (AG) is a MADS box transcription factor. It together with other MADS box proteins is necessary and sufficient for induction of reproductive organ development in <i>Arabidopsis</i> .
Synonyms:	AG, AGAMOUS
Immunogen:	Recombinant protein of AG (88-252 aa) derived from <i>Arabidopsis thaliana</i> AT4G18960.
Form:	Lyophilized
Quantity:	150 µg
Purification:	Serum
Reconstitution:	Reconstitution with 150 µl of sterile water. "Note: please spin tube briefly prior to opening it to avoid any losses that might occur from lyophilized material adhering to the cap or sides of the tube".
Stability & Storage:	Use a manual defrost freezer and avoid repeated freeze-thaw cycles. 12 months from date of receipt, -20 to -70°C as supplied. 6 months, -20 to -70°C under sterile conditions after reconstitution. 1 month, 2 to 8°C under sterile conditions after reconstitution.
Shipping:	The product is shipped at 4°C. Upon receipt, store it immediately at the temperature recommended above.

Application Information

Recommended Dilution:	Western Blot (1:1000-1:5000) Note: Optimal dilutions/concentrations should be determined by the end user.
Expected / apparent MW:	29 kDa (<i>Arabidopsis thaliana</i>), 24 kDa (Recombinant protein)
Confirmed Reactivity:	<i>Arabidopsis thaliana</i>
Predicted Reactivity:	For more species homologues information, please contact tech support at tech@phytoab.com .

Research Use Only

Application Example



Recom: 1 ng, 10 ng and 50 ng r recombinant protein containing the peptide for immunization and having a molecular mass of 25 kDa.

Electrophoresis: 15% SDS-PAGE

Transfer: blotting to NC (nitrocellulose) membrane for 1 h.

Blocking: 5% skim milk at RT or 4°C for 1 h.

Primary antibody: 1:1000 dilution overnight at 4°C.

Secondary antibody: 1:10000 dilution using Goat Anti-Rabbit IgG H&L (HRP) (Cat# PHY6000)

Detection: using chemiluminescence substrate and image were captured with CCD camera.