

Anti-Ethylene insensitive 2 antibody

Catalog: PHY1711S

Product Information

Description:	Rabbit polyclonal antibody
Background:	EIN2 is a positive regulator in ethylene signaling in Arabidopsis. It acts downstream of CTR1. It positively regulates ORE1 and negatively regulates mir164A, B, C to regulate leaf senescence.
Synonyms:	EIN2, ATEIN2, CKR1, CYTOKININ RESISTANT 1, ENHANCED RESPONSE TO ABA3, ERA3, ETHYLENE INSENSITIVE 2, ORE2, ORE3, ORESARA 2, ORESARA 3, PIR2
Immunogen:	Recombinant protein of EIN2 (503-897 aa) derived from <i>Arabidopsis thaliana</i> AT5G03280.
Form:	Lyophilized
Quantity:	150 µg
Purification:	Serum
Reconstitution:	Reconstitution with 150 µl of sterile water. "Note: please spin tube briefly prior to opening it to avoid any losses that might occur from lyophilized material adhering to the cap or sides of the tube".
Stability & Storage:	Use a manual defrost freezer and avoid repeated freeze-thaw cycles. 12 months from date of receipt, -20 to -70°C as supplied. 6 months, -20 to -70°C under sterile conditions after reconstitution. 1 month, 2 to 8°C under sterile conditions after reconstitution.
Shipping:	The product is shipped at 4°C. Upon receipt, store it immediately at the temperature recommended above.

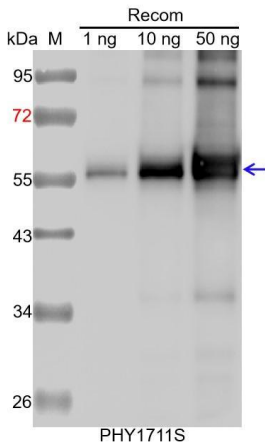
Application Information

Recommended Dilution:	Western Blot (1:1000-1:2000) Note: Optimal dilutions/concentrations should be determined by the end user.
Expected / apparent MW:	141 kDa
Confirmed Reactivity:	<i>Arabidopsis thaliana</i>
Predicted Reactivity:	For more species homologues information, please contact tech

Research Use Only

support at tech@phytoab.com.

Application Example



Recom: 1 ng, 10 ng and 50 ng recombinant protein containing the peptide for immunization and having a molecular mass of 56 kDa.

Electrophoresis: 12% SDS-PAGE

Transfer: blotting to NC (nitrocellulose) membrane for 1 h.

Blocking: 5% skim milk at RT or 4°C for 1 h.

Primary antibody: 1:1000 dilution overnight at 4°C.

Secondary antibody: 1:10000 dilution using Goat Anti-Rabbit IgG H&L (HRP) (Cat# PHY6000)

Detection: using chemiluminescence substrate and image were captured with CCD camera.