

Anti-Signal recognition particle 54 kDa protein, chloroplastic antibody

Catalog: PHY2332S

Product Information

Description:	Rabbit polyclonal antibody
Background:	The conserved 54-kDa SRP subunit in higher plant chloroplasts (cpSRP54) is not bound to an SRP RNA, an essential SRP component in bacteria, but forms a stable heterodimer with the chloroplast-specific cpSRP43.
Synonyms:	cpSRP54, SRP54, 54 CHLOROPLAST PROTEIN, 54CP, CHLOROPLAST SIGNAL RECOGNITION PARTICLE 54 KDA SUBUNIT, FFC, FIFTY-FOUR CHLOROPLAST HOMOLOGUE, SIGNAL RECOGNITION PARTICLE 54 KDA SUBUNIT CHLOROPLAST PROTEIN, SRP54CP
Immunogen:	Recombinant mature cpSRP54 protein derived from <i>Arabidopsis thaliana</i> AT5G03940.
Form:	Lyophilized
Quantity:	150 µg
Purification:	Serum
Reconstitution:	Reconstitution with 150µl of sterile water. "Note: please spin tube briefly prior to opening it to avoid any losses that might occur from lyophilized material adhering to the cap or sides of the tube".
Stability &	Use a manual defrost freezer and avoid repeated freeze-thaw cycles.
Storage:	12 months from date of receipt, -20 to -70°C as supplied. 6 months, -20 to -70°C under sterile conditions after reconstitution. 1 month, 2 to 8°C under sterile conditions after reconstitution.
Shipping:	The product is shipped at 4°C. Upon receipt, store it immediately at the temperature recommended above.

Application Information

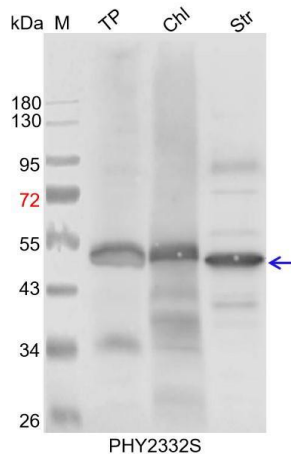
Recommended Dilution:	Western Blot (1:1000-1:2000) Note: Optimal dilutions/concentrations should be determined by the end user.
Expected / apparent MW:	61 / 54 kDa

Research Use Only

Confirmed Reactivity: *Arabidopsis thaliana*

Predicted Reactivity: For more species homologues information, please contact tech support at tech@phytoab.com.

Application Example



TP: 40 µg total protein from *Arabidopsis thaliana*.

Chl: 10 µl total chloroplast protein from *Arabidopsis thaliana*.

Str: 12 µg stromal protein from *Arabidopsis thaliana*.

Electrophoresis: 12% SDS-PAGE

Transfer: blotting to NC (nitrocellulose) membrane for 1 h.

Blocking: 5% skim milk at RT or 4°C for 1 h.

Primary antibody: 1:1000 dilution overnight at 4°C.

Secondary antibody: 1:10000 dilution using Goat Anti-Rabbit IgG H&L (HRP) (Cat# PHY6000)

Detection: using chemiluminescence substrate and image were captured with CCD camera.