

# Anti-Translocase of chloroplast 34, chloroplastic antibody

Catalog: PHY1264S

## Product Information

<b>Description:</b>	Rabbit polyclonal antibody
<b>Background:</b>	TOC34 is an outer membrane GTPase protein that may function in import of nuclear encoded proteins into the chloroplast.
<b>Synonyms:</b>	TOC34, ARABIDOPSIS THALIANA TRANSLOCON AT THE OUTER ENVELOPE MEMBRANE OF CHLOROPLASTS 34, ATTOC34, OEP34, TRANSLOCON AT THE OUTER ENVELOPE MEMBRANE OF CHLOROPLASTS 34
<b>Immunogen:</b>	Recombinant protein (1-266 aa) derived from <i>Arabidopsis thaliana</i> TOC34 (AT5G05000).
<b>Form:</b>	Lyophilized
<b>Quantity:</b>	150 µg
<b>Purification:</b>	Serum
<b>Reconstitution:</b>	Reconstitution with 150 µl of sterile water. "Note: please spin tube briefly prior to opening it to avoid any losses that might occur from lyophilized material adhering to the cap or sides of the tube".
<b>Stability &amp; Storage:</b>	Use a manual defrost freezer and avoid repeated freeze-thaw cycles. 12 months from date of receipt, -20 to -70°C as supplied. 6 months, -20 to -70°C under sterile conditions after reconstitution. 1 month, 2 to 8°C under sterile conditions after reconstitution.
<b>Shipping:</b>	The product is shipped at 4°C. Upon receipt, store it immediately at the temperature recommended above.

## Application Information

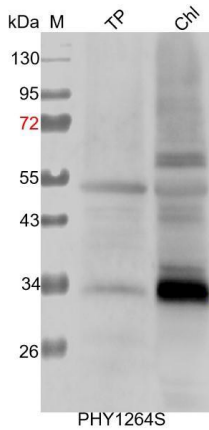
<b>Recommended Dilution:</b>	Western Blot (1:1000-1:2000) Note: Optimal dilutions/concentrations should be determined by the end user.
<b>Expected / apparent MW:</b>	35 / 34 kDa
<b>Confirmed Reactivity:</b>	<i>Arabidopsis thaliana</i>

Research Use Only

**Predicted Reactivity:**

For more species homologues information, please contact tech support at [tech@phytoab.com](mailto:tech@phytoab.com).

**Application Example**



TP: 20 µg total protein from *Arabidopsis thaliana*.

Chl: 10 µl total chloroplast protein from *Arabidopsis thaliana*.

**Electrophoresis:** 15% SDS-PAGE

**Transfer:** blotting to NC (nitrocellulose) membrane for 1 h.

**Blocking:** 5% skim milk at RT or 4°C for 1 h.

**Primary antibody:** 1:1000 dilution overnight at 4°C.

**Secondary antibody:** 1:10000 dilution using Goat Anti-Rabbit IgG H&L (HRP) (Cat# PHY6000)

**Detection:** using chemiluminescence substrate and image were captured with CCD camera.