

Anti-Pheophytinase, chloroplastic antibody

Catalog: PHY2535A

Product Information

Description:	Rabbit polyclonal antibody
Background:	Chlorophyll (Chl) degradation occurs naturally during leaf maturation and senescence, and can be induced by stresses, both processes involving the regulation of plant hormones. PPH is a pheophytinase that is involved in chlorophyll breakdown.
Synonyms:	PPH, CO-REGULATED WITH NYE1, CRN1, PHEOPHYTINASE
Immunogen:	KLH-conjugated synthetic peptide (18 aa from N terminal section) derived from <i>Arabidopsis thaliana</i> PPH (AT5G13800).
Form:	Lyophilized
Quantity:	150 µg
Purification:	Immunogen affinity purified
Reconstitution:	Reconstitution with 150 µl of 0.01 M sterile PBS. "Note: please spin tube briefly prior to opening it to avoid any losses that might occur from lyophilized material adhering to the cap or sides of the tube".
Stability & Storage:	Use a manual defrost freezer and avoid repeated freeze-thaw cycles. 12 months from date of receipt, -20 to -70°C as supplied. 6 months, -20 to -70°C under sterile conditions after reconstitution. 1 month, 2 to 8°C under sterile conditions after reconstitution.
Shipping:	The product is shipped at 4°C. Upon receipt, store it immediately at the temperature recommended above.

Application Information

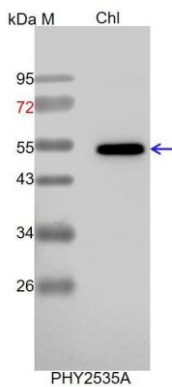
Recommended Dilution:	Western Blot (1:1000-1:2000) Note: Optimal dilutions/concentrations should be determined by the end user.
Expected / apparent MW:	55 / 53 kDa
Confirmed Reactivity:	<i>Arabidopsis thaliana</i>
Predicted Reactivity:	Among species analyzed, the sequence of the synthetic peptide used for immunization is 100% homologues with the sequence in <i>Brassica</i>

Research Use Only

rapa, *Brassica napus*, and 80-99% homologues with the sequence in *Vitis vinifera*, *Populus trichocarpa*, *Gossypium raimondii*, *Glycine max*, *Nicotiana tabacum*, *Solanum lycopersicum*, *Solanum tuberosum*, *Cucumis sativus*, *Medicago truncatula*, *Spinacia oleracea*, *Oryza sativa*, *Hordeum vulgare*, *Triticum aestivum*, *Sorghum bicolor*, *Zea mays*, *Panicum virgatum*.

For more species homologues information, please contact tech support at tech@phytoab.com.

Application Example



Chl: 40 µg total chloroplast protein from *Arabidopsis thaliana*.

Electrophoresis: 15% SDS-PAGE

Transfer: blotting to NC (nitrocellulose) membrane for 1 h.

Blocking: 5% skim milk at RT or 4°C for 1 h.

Primary antibody: 1:2000 dilution overnight at 4°C.

Secondary antibody: 1:10000 dilution using Goat Anti-Rabbit IgG H&L(HRP) (Cat# PHY6000).

Detection: using chemiluminescence substrate and image were captured with CCD camera.