

# Anti-Stearoyl-[acyl-carrier-protein] 9-desaturase 1/5, chloroplastic antibody

Catalog: PHY2186S

## Product Information

<b>Description:</b>	Rabbit polyclonal antibody
<b>Background:</b>	The <i>A. thaliana</i> contains seven AtSAD proteins, including SUPPRESSOR OF SALICYLIC ACID INSENSITIVE2 (AtSSI2/AtFAB2, AT2G43710), AtSAD1 (AT5G16240), AtSAD2 (AT3G02610), AtSAD3 (AT5G16230), AtSAD4 (AT3G02620), AtSAD5 (AT3G02630), and AtSAD6 (AT1G43800). They are the only enzymes catalyzing the conversion of C18:0 into C18:1 in plant cells, and thus their activity primarily controls the saturated to monounsaturated FAs ratio.
<b>Synonyms:</b>	SAD1/5, AAD1/5
<b>Immunogen:</b>	KLH-conjugated synthetic peptide derived (14 aa from N terminal section) from <i>Arabidopsis thaliana</i> SAD1 (AT5G16240), SAD5 (AT3G02630).
<b>Form:</b>	Lyophilized
<b>Quantity:</b>	150 µg
<b>Purification:</b>	Serum Peptide affinity form antibody available upon request at <a href="mailto:info@phytoab.com">info@phytoab.com</a> .
<b>Reconstitution:</b>	Reconstitution with 150 µl of sterile water. "Note: please spin tube briefly prior to opening it to avoid any losses that might occur from lyophilized material adhering to the cap or sides of the tube".
<b>Stability &amp; Storage:</b>	Use a manual defrost freezer and avoid repeated freeze-thaw cycles. 12 months from date of receipt, -20 to -70°C as supplied. 6 months, -20 to -70°C under sterile conditions after reconstitution. 1 month, 2 to 8°C under sterile conditions after reconstitution.
<b>Shipping:</b>	The product is shipped at 4°C. Upon receipt, store it immediately at the temperature recommended above.

## Application Information

<b>Recommended Dilution:</b>	Western Blot (1:1000-1:5000) Note: Optimal dilutions/concentrations should be determined by the end user.
------------------------------	--------------------------------------------------------------------------------------------------------------

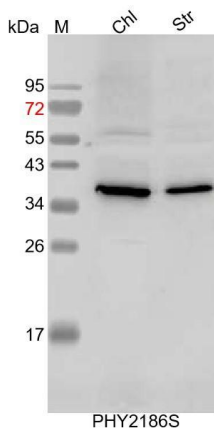
Research Use Only

**Expected / apparent MW:** 45 / 40 kDa

**Confirmed Reactivity:** *Arabidopsis thaliana*

**Predicted Reactivity:** Among species analyzed, the sequence of the synthetic peptide used for immunization is 100% homologues with the sequence in *Brassica napus*, *Brassica rapa*, and 80-99% homologues with the sequence in *Populus trichocarpa*, *Hordeum vulgare*, *Triticum aestivum*, *Zea mays*, *Setaria viridis*, *Sorghum bicolor*, *Panicum virgatum*, *Oryza sativa*, *Solanum lycopersicum*, *Solanum tuberosum*, *Vitis vinifera*.  
For more species homologues information, please contact tech support at [tech@phytoab.com](mailto:tech@phytoab.com).

## Application Example



Chl: 5  $\mu$ l total chloroplast protein from *Arabidopsis thaliana*.

Str: 10  $\mu$ g stromal protein from *Arabidopsis thaliana*.

**Electrophoresis:** 15% SDS-PAGE

**Transfer:** blotting to NC (nitrocellulose) membrane for 1 h.

**Blocking:** 5% skim milk at RT or 4°C for 1 h.

**Primary antibody:** 1:5000 dilution overnight at 4°C.

**Secondary antibody:** 1:10000 dilution using Goat Anti-Rabbit IgG H&L (HRP) (Cat# PHY6000).

**Detection:** using chemiluminescence substrate and image were captured with CCD camera.