

# Anti-Protein TIC40, chloroplastic antibody

Catalog: PHY1248S

## Product Information

<b>Description:</b>	Rabbit polyclonal antibody
<b>Background:</b>	TIC40 is a protein in the chloroplast inner membrane translocon complex. It is involved in protein precursor import into chloroplasts and reinsertion of proteins from the chloroplast stroma into the inner membrane. Three components of the chloroplast protein translocon, Tic110 (AT1G06950), Hsp93 (ClpC), and Tic40 (AT5G16620), have been shown to be important for protein translocation across the inner envelope membrane into the stroma.
<b>Synonyms:</b>	TIC40, PDE120, PIGMENT DEFECTIVE EMBRYO 120, TRANSLOCON AT THE INNER ENVELOPE MEMBRANE OF CHLOROPLASTS 40
<b>Immunogen:</b>	Recombinant protein (175-447 aa) derived from <i>Arabidopsis thaliana</i> TIC40 (AT5G16620).
<b>Form:</b>	Lyophilized
<b>Quantity:</b>	150 µg
<b>Purification:</b>	Serum
<b>Reconstitution:</b>	Reconstitution with 150 µl of sterile water. "Note: please spin tube briefly prior to opening it to avoid any losses that might occur from lyophilized material adhering to the cap or sides of the tube".
<b>Stability &amp;</b>	Use a manual defrost freezer and avoid repeated freeze-thaw cycles.
<b>Storage:</b>	12 months from date of receipt, -20 to -70°C as supplied. 6 months, -20 to -70°C under sterile conditions after reconstitution. 1 month, 2 to 8°C under sterile conditions after reconstitution.
<b>Shipping:</b>	The product is shipped at 4°C. Upon receipt, store it immediately at the temperature recommended above.

## Application Information

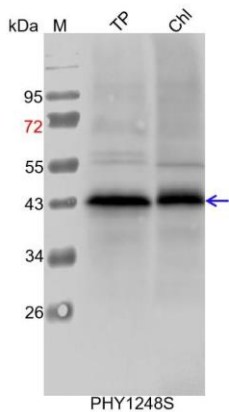
<b>Recommended Dilution:</b>	Western Blot (1:1000-1:2000) Note: Optimal dilutions/concentrations should be determined by the end user.
<b>Expected / apparent MW:</b>	49 / 43 kDa

Research Use Only

**Confirmed Reactivity:** *Arabidopsis thaliana*

**Predicted Reactivity:** For more species homologues information, please contact tech support at [tech@phytoab.com](mailto:tech@phytoab.com).

## Application Example



TP: 20 µg total protein from *Arabidopsis thaliana*.

Chl: 10 µl total chloroplast protein from *Arabidopsis thaliana*.

**Electrophoresis:** 15% SDS-PAGE

**Transfer:** blotting to NC (nitrocellulose) membrane for 1 h.

**Blocking:** 5% skim milk at RT or 4°C for 1 h.

**Primary antibody:** 1:1000 dilution overnight at 4°C.

**Secondary antibody:** 1:10000 dilution using Goat Anti-Rabbit IgG H&L (HRP) (Cat# PHY6000)

**Detection:** using chemiluminescence substrate and image were captured with CCD camera.