

Anti-Elongation factor 1B-alpha 2 antibody

Catalog: PHY1346S

Product Information

Description:	Rabbit polyclonal antibody
Background:	eEF1B-alpha 2 is one of Translation elongation factor EF1B/ribosomal protein S6 family protein. It is the primary nucleotide exchange factor.
Synonyms:	eEF1B-alpha 2
Immunogen:	KLH-conjugated synthetic peptide (14 aa from N terminal section) derived from <i>Arabidopsis thaliana</i> eEF1B-alpha 2 (AT5G19510).
Form:	Lyophilized
Quantity:	150 µg
Purification:	Serum
	Peptide affinity form antibody available upon request at info@phytoab.com .
Reconstitution:	Reconstitution with 150 µl of sterile water. "Note: please spin tube briefly prior to opening it to avoid any losses that might occur from lyophilized material adhering to the cap or sides of the tube".
Stability & Storage:	Use a manual defrost freezer and avoid repeated freeze-thaw cycles. 12 months from date of receipt, -20 to -70°C as supplied. 6 months, -20 to -70°C under sterile conditions after reconstitution. 1 month, 2 to 8°C under sterile conditions after reconstitution.
Shipping:	The product is shipped at 4°C. Upon receipt, store it immediately at the temperature recommended above.

Application Information

Recommended Dilution:	Western Blot (1:1000-1:2000) Note: Optimal dilutions/concentrations should be determined by the end user.
Expected / apparent MW:	24 kDa
Confirmed Reactivity:	<i>Arabidopsis thaliana</i>
Predicted Reactivity:	Among species analyzed, the sequence of the synthetic peptide used for immunization is 100% homologues with the sequence in <i>Brassica rapa</i> , <i>Brassica napus</i> , <i>Triticum aestivum</i> , <i>Spinacia oleracea</i> ,

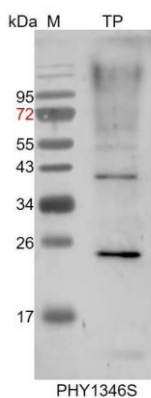
Research Use Only

Hordeum vulgare subsp. vulgare, and 80-99% homologues with the sequence in *Cucumis sativus*, *Vitis vinifera*, *Panicum virgatum*, *Populus trichocarpa*, *Setaria viridis*, *Gossypium raimondii*, *Glycine max*, *Physcomitrium patens*, *Oryza sativa Japonica Group*, *Medicago truncatula*, *Zea mays*, *Sorghum bicolor*, *Solanum tuberosum*.

The sequence of the synthetic peptide used for immunization is 85% homologues with the sequence in eEF1B-alpha1 (AT5G12110).

For more species homologues information, please contact tech support at tech@phytoab.com.

Application Example



TP: 5 µg total protein from *Arabidopsis thaliana*.

Electrophoresis: 15% SDS-PAGE

Transfer: blotting to NC (nitrocellulose) membrane for 1 h.

Blocking: 5% skim milk at RT or 4°C for 1 h.

Primary antibody: 1:1000 dilution overnight at 4°C.

Secondary antibody: 1:10000 dilution using Goat Anti-Rabbit IgG H&L(HRP) (Cat# PHY6000).

Detection: using chemiluminescence substrate and image were captured with CCD camera.