

Anti-Probable transmembrane GTPase FZO-like, chloroplastic antibody

Catalog: PHY1890S

Product Information

Description:	Rabbit polyclonal antibody
Background:	FZL is a new plant-specific member of the dynamin superfamily; it is primarily localized to the chloroplast inner envelope and not to the thylakoids, but nevertheless affects the maintenance of thylakoid membranes and photosynthetic protein complexes.
Synonyms:	FZL, FZO-LIKE
Immunogen:	Recombinant protein of FZL (60-475aa) derived from <i>Arabidopsis thaliana</i> AT1G03160.
Form:	Lyophilized
Quantity:	150 µg
Purification:	Serum
Reconstitution:	Reconstitution with 150µl of sterile water. "Note: please spin tube briefly prior to opening it to avoid any losses that might occur from lyophilized material adhering to the cap or sides of the tube".
Stability & Storage:	Use a manual defrost freezer and avoid repeated freeze-thaw cycles. 12 months from date of receipt, -20 to -70°C as supplied. 6 months, -20 to -70°C under sterile conditions after reconstitution. 1 month, 2 to 8°C under sterile conditions after reconstitution.
Shipping:	The product is shipped at 4°C. Upon receipt, store it immediately at the temperature recommended above.

Application Information

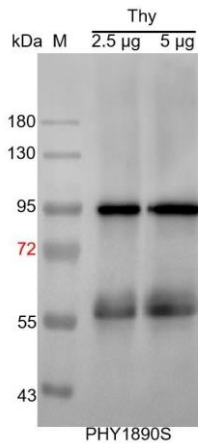
Recommended Dilution:	Western Blot (1:1000-1:2000) Note: Optimal dilutions/concentrations should be determined by the end user.
Expected / apparent MW:	101 / 95 kDa
Confirmed Reactivity:	<i>Arabidopsis thaliana</i>
Predicted Reactivity:	For more species homologues information, please contact tech

Research Use Only

support at tech@phytoab.com.

Application Example

Example1:



Thy: thylakoid membrane protein from *Arabidopsis thaliana* containing 2.5 µg, and 5 µg of chlorophyll, respectively.

Electrophoresis: 10% SDS-PAGE

Transfer: blotting to NC (nitrocellulose) membrane for 1 h.

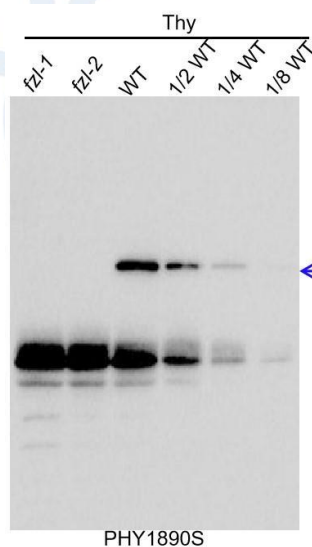
Blocking: 5% skim milk at RT or 4°C for 1 h.

Primary antibody: 1:1000 dilution overnight at 4°C.

Secondary antibody: 1:10000 dilution using Goat Anti-Rabbit IgG H&L (HRP) (Cat# PHY6000).

Detection: using chemiluminescence substrate and image were captured with CCD camera.

Example2:



Thy-WT: thylakoid membrane protein from WT of *Arabidopsis thaliana* leaf containing 0.625µg (1/8 WT), 1.25 µg (1/4 WT), 2.5 µg (1/2 WT) and 5 µg (WT) of chlorophyll, respectively.

Thy-*fzl*: thylakoid membrane protein from *fzl* of *Arabidopsis thaliana* containing 5 µg of chlorophyll, respectively.

Electrophoresis: 10% SDS-PAGE

Transfer: blotting to NC (nitrocellulose) membrane for 1 h.

Blocking: 5% skim milk at RT or 4°C for 1 h.

Primary antibody: 1:1000 dilution overnight at 4°C.

Secondary antibody: 1:10000 dilution using Goat Anti-Rabbit IgG H&L (HRP) (Cat# PHY6000).

Detection: using chemiluminescence substrate and image were captured with CCD camera.