

# Anti-Thioredoxin H3 antibody

Catalog: PHY1546S

## Product Information

<b>Description:</b>	Rabbit polyclonal antibody
<b>Background:</b>	Thioredoxin (Trx) is a ubiquitous multifunctional redox protein with a single disulfide bridge. It functions as a general disulfide oxidoreductase and is involved in numerous redox-dependent cellular processes including activation of ribonucleotide reductase, modulation of transcription factors, promotion of a variety of tumors, and photosynthetic activity of plant cells. Trxs proteins are including trxH1 (AT3G51030), trxH2 (AT5G39950), trxH3 (AT5G42980), trxH4 (AT1G19730) and trxH5 (AT1G45145).
<b>Synonyms:</b>	trxH3, ATH3, ATTRX3, ATTRXH3, THIOREDOXIN 3, THIOREDOXIN H-TYPE 3, THIOREDOXIN H3, TRX3
<b>Immunogen:</b>	KLH-conjugated synthetic peptide (15 aa from C terminal section) derived from <i>Arabidopsis thaliana</i> trxH3 (AT5G42980).
<b>Form:</b>	Lyophilized
<b>Quantity:</b>	150 µg
<b>Purification:</b>	Serum Peptide affinity form antibody available upon request at <a href="mailto:info@phytoab.com">info@phytoab.com</a> .
<b>Reconstitution:</b>	Reconstitution with 150 µl of sterile water. "Note: please spin tube briefly prior to opening it to avoid any losses that might occur from lyophilized material adhering to the cap or sides of the tube".
<b>Stability &amp; Storage:</b>	Use a manual defrost freezer and avoid repeated freeze-thaw cycles. 12 months from date of receipt, -20 to -70°C as supplied. 6 months, -20 to -70°C under sterile conditions after reconstitution. 1 month, 2 to 8°C under sterile conditions after reconstitution.
<b>Shipping:</b>	The product is shipped at 4°C. Upon receipt, store it immediately at the temperature recommended above.

## Application Information

<b>Recommended Dilution:</b>	Western Blot (1:1000-1:2000) Note: Optimal dilutions/concentrations should be determined by the end user.
------------------------------	--

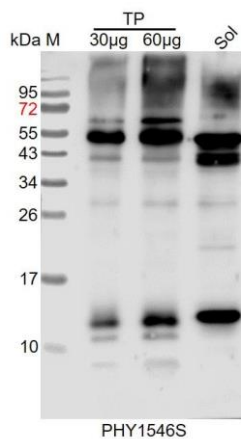
Research Use Only

**Expected / apparent MW:** 13 kDa

**Confirmed Reactivity:** *Arabidopsis thaliana*

**Predicted Reactivity:** For more species homologues information, please contact tech support at [tech@phytoab.com](mailto:tech@phytoab.com).

## Application Example



TP: 30 µg and 60 µg total protein from *Arabidopsis thaliana*, respectively.

Sol: 30 µg soluble protein from *Arabidopsis thaliana*.

**Electrophoresis:** 15% SDS-PAGE

**Transfer:** blotting to NC (nitrocellulose) membrane for 1 h.

**Blocking:** 5% skim milk at RT or 4°C for 1 h.

**Primary antibody:** 1:1000 dilution overnight at 4°C.

**Secondary antibody:** 1:10000 dilution using Goat Anti-Rabbit IgG H&L(HRP) (Cat# PHY6000).

**Detection:** using chemiluminescence substrate and image were captured with CCD camera.