

Anti-Heme oxygenase 1 antibody

Catalog: PHY1714S

Product Information

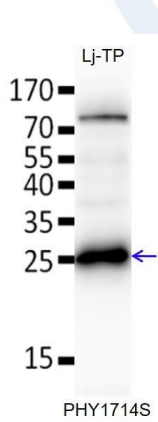
Description:	Rabbit polyclonal antibody
Background:	Lj1g3v0672150.1
Synonyms:	LjHO1 (<i>Lotus japonicus</i> heme oxygenase1)
Immunogen:	Recombinant protein of LjHO1 (57-282 aa) derived from <i>Lotus japonicus</i> Lj1g3v0672150.1.
Form:	Lyophilized
Quantity:	150 µg
Purification:	Serum
Reconstitution:	Reconstitution with 150 µl of sterile water. "Note: please spin tube briefly prior to opening it to avoid any losses that might occur from lyophilized material adhering to the cap or sides of the tube".
Stability & Storage:	Use a manual defrost freezer and avoid repeated freeze-thaw cycles. 12 months from date of receipt, -20 to -70°C as supplied. 6 months, -20 to -70°C under sterile conditions after reconstitution. 1 month, 2 to 8°C under sterile conditions after reconstitution.
Shipping:	The product is shipped at 4°C. Upon receipt, store it immediately at the temperature recommended above.

Application Information

Recommended Dilution:	Western Blot (1:1000-1:2000) Note: Optimal dilutions/concentrations should be determined by the end user.
Expected / apparent MW:	33 kDa
Confirmed Reactivity:	Anti-LjHO1 recognizes LjHO1 Δ TP or full length LjHO1 proteins or LjHO1 proteins fused with tag.
Predicted Reactivity:	For more species homologues information, please contact tech support at tech@phytoab.com .

Research Use Only

Application Example



Lj-TP: 30 µg total protein from *Lotus japonicas*.

Electrophoresis: 10% SDS-PAGE

Transfer: blotting to PVDF membrane for 1h.

Blocking: 5% skim milk at RT or 4°C for 1 h.

Primary antibody: 1:1500 dilution overnight at 4°C.

Secondary antibody: 1:20000 dilution using Goat Anti-Rabbit IgG H&L (HRP) (Cat# PHY6000).

Detection: using chemiluminescence substrate and image were captured with CCD camera.