

# Anti-Subunit IV of Cyt b6/f complex antibody

Catalog: PHY2456S

## Product Information

<b>Description:</b>	Rabbit polyclonal antibody
<b>Background:</b>	Cytochrome b6-f complex subunit 4 is component of the cytochrome b6-f complex, which mediates electron transfer between photosystem II (PSII) and photosystem I (PSI), cyclic electron flow around PSI, and state transitions.
<b>Synonyms:</b>	PetD, PETD, PHOTOSYNTHETIC ELECTRON TRANSFER D
<b>Immunogen:</b>	KLH-conjugated synthetic peptide (15 aa from C terminal section) derived from <i>Arabidopsis thaliana</i> PetD (ATCG00730).
<b>Form:</b>	Lyophilized
<b>Quantity:</b>	150 µg
<b>Purification:</b>	Serum
<b>Reconstitution:</b>	Peptide affinity form antibody available upon request at <a href="mailto:info@phytoab.com">info@phytoab.com</a> . Reconstitution with 150 µl of sterile water. "Note: please spin tube briefly prior to opening it to avoid any losses that might occur from lyophilized material adhering to the cap or sides of the tube".
<b>Stability &amp; Storage:</b>	Use a manual defrost freezer and avoid repeated freeze-thaw cycles. 12 months from date of receipt, -20 to -70°C as supplied. 6 months, -20 to -70°C under sterile conditions after reconstitution. 1 month, 2 to 8°C under sterile conditions after reconstitution.
<b>Shipping:</b>	The product is shipped at 4°C. Upon receipt, store it immediately at the temperature recommended above.

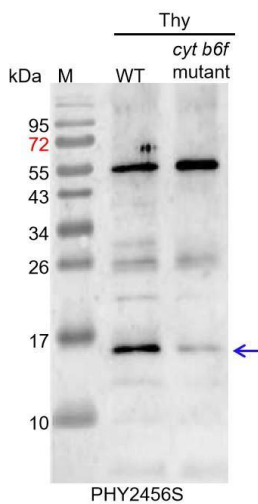
## Application Information

<b>Recommended Dilution:</b>	Western Blot (1:1000-1:2000) Note: Optimal dilutions/concentrations should be determined by the end user.
<b>Expected / apparent MW:</b>	17 / 16 kDa
<b>Confirmed Reactivity:</b>	<i>Arabidopsis thaliana</i>
<b>Predicted Reactivity:</b>	Among species analyzed, the sequence of the synthetic peptide used for immunization is 100% homologous with the sequence in

Research Use Only

*Medicago truncatula*, *Brassica rapa*, *Leymus chinensi*, *Zea mays*, *Solanum lycopersicum*, *Setaria viridis*, *Oryza sativa*, *Sorghum bicolor*, *Cucumis sativus*, *Hordeum vulgare*, *Triticum aestivum*, *Brassica napus*, *Physcomitrium patens*, *Populus trichocarpa*, *Glycine max*, *Nicotiana tabacum*, *Spinacia oleracea*, and 80-99% homologues with the sequence in *Gossypium raimondii*.  
For more species homologues information, please contact tech support at [tech@phytoab.com](mailto:tech@phytoab.com).

## Application Example



**Thy-WT:** thylakoid membrane protein from WT of *Arabidopsis thaliana* containing 0.75  $\mu$ g of chlorophyll.

**Thy-*cyt b6f*:** thylakoid membrane protein from an *Arabidopsis* mutant with low accumulation of Cyt b6f complex containing 0.75  $\mu$ g of chlorophyll

**Electrophoresis:** 15% SDS-Urea-PAGE

**Transfer:** blotting to NC (nitrocellulose) membrane for 1 h.

**Blocking:** 5% skim milk at RT or 4°C for 1 h.

**Primary antibody:** 1:1000 dilution overnight at 4°C.

**Secondary antibody:** 1:10000 dilution using Goat Anti-Rabbit IgG H&L (HRP) (Cat# PHY6000)

**Detection:** using chemiluminescence substrate and image were captured with CCD camera.