

Anti-3,8-divinyl protochlorophyllide a 8-vinyl reductase antibody

Catalog: PHY2338S

Product Information

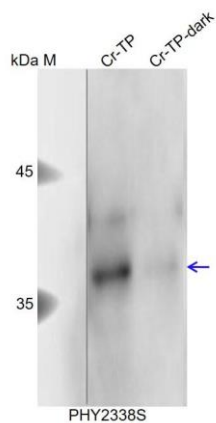
Description:	Rabbit polyclonal antibody
Background:	CrDVR1
Synonyms:	CrDVR1
Immunogen:	Recombinant protein of CrDVR1 (59-415aa) derived from <i>Chlamydomonas reinhardtii</i> Cre01.g042800.
Form:	Lyophilized
Quantity:	150 µg
Purification:	Serum
Reconstitution:	Reconstitution with 150 µl of sterile water. "Note: please spin tube briefly prior to opening it to avoid any losses that might occur from lyophilized material adhering to the cap or sides of the tube".
Stability & Storage:	Use a manual defrost freezer and avoid repeated freeze-thaw cycles. 12 months from date of receipt, -20 to -70°C as supplied. 6 months, -20 to -70°C under sterile conditions after reconstitution. 1 month, 2 to 8°C under sterile conditions after reconstitution.
Shipping:	The product is shipped at 4°C. Upon receipt, store it immediately at the temperature recommended above.

Application Information

Recommended Dilution:	Western Blot (1:1000-1:2000) Note: Optimal dilutions/concentrations should be determined by the end user.
Expected / apparent MW:	45 / 38 kDa
Confirmed Reactivity:	<i>Chlamydomonas reinhardtii</i>
Predicted Reactivity:	For homologues with other species especially algae, please contact tech support at tech@phytoab.com .

Research Use Only

Application Example



Cr-TP: 30 μ g total protein from *Chlamydomonas reinhardtii* 4A.

Cr-TP-dark: 30 μ g total protein from *Chlamydomonas reinhardtii* 4A-dark.

Electrophoresis: 10% SDS-PAGE

Transfer: blotting to NC (nitrocellulose) membrane for 1 h.

Blocking: 5% skim milk at RT or 4°C for 1 h.

Primary antibody: 1:1000 dilution overnight at 4°C.

Secondary antibody: 1:10000 dilution using Goat Anti-Rabbit IgG H&L (HRP) (Cat# PHY6000)

Detection: using chemiluminescence substrate and image were captured with CCD camera.