

# Anti-Ferrochelatase antibody

Catalog: PHY2340S

## Product Information

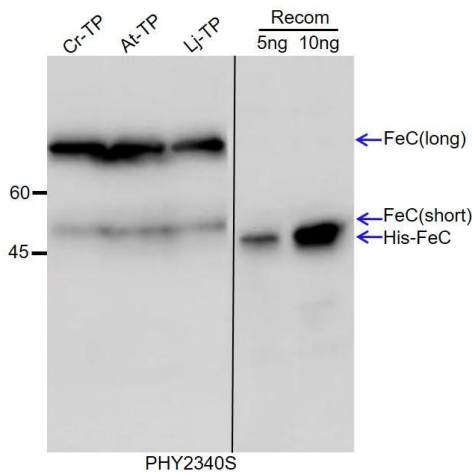
<b>Description:</b>	Rabbit polyclonal antibody
<b>Background:</b>	CrFeCh
<b>Synonyms:</b>	CrFeCh
<b>Immunogen:</b>	Recombinant protein of CrFeCh (48-427aa) derived from <i>Chlamydomonas reinhardtii</i> Cre07.g339750.
<b>Form:</b>	Lyophilized
<b>Quantity:</b>	150 µg
<b>Purification:</b>	Serum
<b>Reconstitution:</b>	Reconstitution with 150µl of sterile water. "Note: please spin tube briefly prior to opening it to avoid any losses that might occur from lyophilized material adhering to the cap or sides of the tube".
<b>Stability &amp; Storage:</b>	Use a manual defrost freezer and avoid repeated freeze-thaw cycles. 12 months from date of receipt, -20 to -70°C as supplied. 6 months, -20 to -70°C under sterile conditions after reconstitution. 1 month, 2 to 8°C under sterile conditions after reconstitution.
<b>Shipping:</b>	The product is shipped at 4°C. Upon receipt, store it immediately at the temperature recommended above.

## Application Information

<b>Recommended Dilution:</b>	Western Blot (1:1000-1:2000) Note: Optimal dilutions/concentrations should be determined by the end user.
<b>Expected / apparent MW:</b>	60 kDa
<b>Confirmed Reactivity:</b>	<i>Chlamydomonas reinhardtii</i> , <i>Lotus japonicas</i> , <i>Arabidopsis thaliana</i>
<b>Predicted Reactivity:</b>	For homologues with other species especially algae, please contact tech support at <a href="mailto:tech@phytoab.com">tech@phytoab.com</a> .

Research Use Only

## Application Example



Cr-TP: 30 µg total protein from *Chlamydomonas reinhardtii*.

At-TP: 30 µg total protein from *Arabidopsis thaliana*.

Lj-TP: 30 µg total protein from *Lotus japonicas*.

Recom: 5 ng and 10 ng recombinant protein containing His-Cr FeCh having a molecular mass of 46kDa.

**Electrophoresis:** 10% SDS-PAGE

**Transfer:** blotting to PVDF membrane for 1h.

**Blocking:** 5% skim milk at RT or 4°C for 1 h.

**Primary antibody:** 1:1000 dilution overnight at 4°C.

**Secondary antibody:** 1:10000 dilution using Goat Anti-Rabbit IgG H&L (HRP) (Cat# PHY6000)

**Detection:** using chemiluminescence substrate and image were captured with CCD camera.