

# Anti-Ferredoxin--NADP reductase, leaf isozyme 1, chloroplastic antibody

Catalog: PHY2738S

## Product Information

<b>Description:</b>	Rabbit polyclonal antibody
<b>Background:</b>	Two distinct ferredoxin-NADP(+)-oxidoreductase (FNR) isoforms were found in chloroplasts of <i>Arabidopsis thaliana</i> , FNR-1 (AT5G66190) and FNR-2 (AT1G20020). The FNR proteins are present in both chloroplast stroma and thylakoid membranes in chloroplasts but are more abundant in the stroma.
<b>Synonyms:</b>	FNR1, ATLFNR1, FERREDOXIN-NADP (+)-OXIDOREDUCTASE 1, LEAF FNR 1, LEAF-TYPE CHLOROPLAST-TARGETED FNR 1, LFNR1
<b>Immunogen:</b>	KLH-conjugated synthetic peptide (16 aa from central section) derived from <i>Arabidopsis thaliana</i> FNR1 (AT5G66190).
<b>Form:</b>	Lyophilized
<b>Quantity:</b>	150 µg
<b>Purification:</b>	Serum Peptide affinity form antibody available upon request at <a href="mailto:info@phytoab.com">info@phytoab.com</a> .
<b>Reconstitution:</b>	Reconstitution with 150 µl of sterile water. "Note: please spin tube briefly prior to opening it to avoid any losses that might occur from lyophilized material adhering to the cap or sides of the tube".
<b>Stability &amp;</b>	Use a manual defrost freezer and avoid repeated freeze-thaw cycles.
<b>Storage:</b>	12 months from date of receipt, -20 to -70°C as supplied. 6 months, -20 to -70°C under sterile conditions after reconstitution. 1 month, 2 to 8°C under sterile conditions after reconstitution.
<b>Shipping:</b>	The product is shipped at 4°C. Upon receipt, store it immediately at the temperature recommended above.

## Application Information

<b>Recommended Dilution:</b>	Western Blot (1:1000-1:5000) Note: Optimal dilutions/concentrations should be determined by the end user.
<b>Expected / apparent MW:</b>	40 / 34 kDa

Research Use Only

**Confirmed Reactivity:**

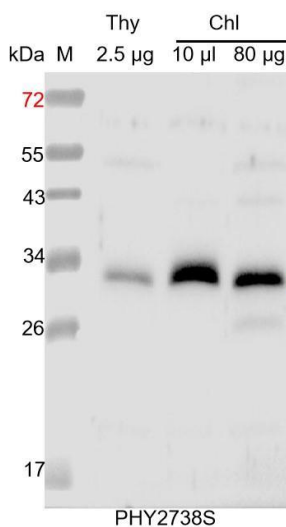
*Arabidopsis thaliana*

**Predicted Reactivity:**

Among species analyzed, the sequence of the synthetic peptide used for immunization is 100% homologues with the sequence in *Brassica napus*, *Brassica rapa*, *Zea mays*, *Oryza sativa*, *Spinacia oleracea*, *Sorghum bicolor*, *Triticum aestivum*, *Populus trichocarpa*, *Hordeum vulgare*, *Setaria viridis*, *Vitis vinifera*, *Glycine max*, *Gossypium raimondii*, and 80-99% homologues with the sequence in *Solanum tuberosum*, *Cucumis sativus*.

For more species homologues information, please contact tech support at [tech@phytoab.com](mailto:tech@phytoab.com).

## Application Example



Thy: thylakoid membrane protein from *Arabidopsis thaliana* containing 2.5 µg of chlorophyll.

Chl: 10 µl and 80 µg total chloroplast protein from *Arabidopsis thaliana*, respectively.

**Electrophoresis:** 15% SDS-PAGE

**Transfer:** blotting to NC (nitrocellulose) membrane for 1 h.

**Blocking:** 5% skim milk at RT or 4°C for 1 h.

**Primary antibody:** 1:5000 dilution overnight at 4°C.

**Secondary antibody:** 1:10000 dilution using Goat Anti-Rabbit IgG H&L (HRP) (Cat# PHY6000)

**Detection:** using chemiluminescence substrate and image were captured with CCD camera.