

Anti-Pheophorbide a oxygenase, chloroplastic antibody

Catalog: PHY3043A

Product Information

Description:	Rabbit polyclonal antibody
Background:	PAO catalyzes the key reaction of chlorophyll catabolism, porphyrin macrocycle cleavage of pheophorbide a (pheide a) to a primary fluorescent catabolite (pFCC). It belongs to the chlorophyll catabolic enzymes (CCEs).
Synonyms:	PAO, ACCELERATED CELL DEATH 1, ACD1, LETHAL LEAF-SPOT 1 HOMOLOG, LLS1, PHEOPHORBIDE A OXYGENASE
Immunogen:	KLH-conjugated synthetic peptide (17 aa from central section) derived from <i>Arabidopsis thaliana</i> PAO (AT3G44880).
Form:	Lyophilized
Quantity:	150 µg
Purification:	Immunogen affinity purified
Reconstitution:	Reconstitution with 150 µl of 0.01 M sterile PBS. "Note: please spin tube briefly prior to opening it to avoid any losses that might occur from lyophilized material adhering to the cap or sides of the tube".
Stability & Storage:	Use a manual defrost freezer and avoid repeated freeze-thaw cycles. 12 months from date of receipt, -20 to -70°C as supplied. 6 months, -20 to -70°C under sterile conditions after reconstitution. 1 month, 2 to 8°C under sterile conditions after reconstitution.
Shipping:	The product is shipped at 4°C. Upon receipt, store it immediately at the temperature recommended above.

Application Information

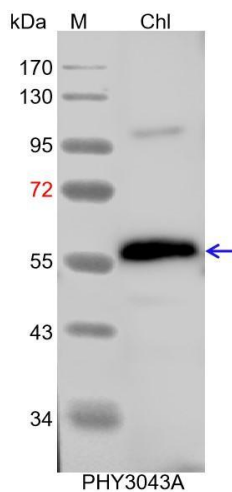
Recommended Dilution:	Western Blot (1:1000-1:2000) Note: Optimal dilutions/concentrations should be determined by the end user.
Expected / apparent MW:	61 / 56 kDa
Confirmed Reactivity:	<i>Arabidopsis thaliana</i>
Predicted Reactivity:	Among species analyzed, the sequence of the synthetic peptide used for immunization is 100% homologues with the sequence in <i>Vitis vinifera</i> , <i>Physcomitrium patens</i> , <i>Brassica napus</i> , <i>Brassica rapa</i> ,

Research Use Only

Glycine max, Solanum tuberosum, Nicotiana tabacum, Cucumis sativus, Medicago truncatula, Spinacia oleracea, Gossypium raimondii, Solanum lycopersicum, Triticum aestivum, Hordeum vulgare, Populus trichocarpa, and 80-99% homologues with the sequence in Oryza sativa, Sorghum bicolor, Setaria viridis, Panicum virgatum, Zea mays.

For more species homologues information, please contact tech support at tech@phytoab.com.

Application Example



Chl: 7.5 μ g total chloroplast protein from *Arabidopsis thaliana*.

Electrophoresis: 12% SDS-PAGE

Transfer: blotting to NC (nitrocellulose) membrane for 1 h.

Blocking: 5% skim milk at RT or 4°C for 1 h.

Primary antibody: 1:2000 dilution overnight at 4°C.

Secondary antibody: 1:10000 dilution using Goat Anti-Rabbit IgG H&L(HRP) (Cat# PHY6000).

Detection: using chemiluminescence substrate and image were captured with CCD camera.