

Anti-Fasciclin-like arabinogalactan protein 4 antibody

Catalog: PHY0907A

Product Information

Description:	Rabbit polyclonal antibody
Background:	FASCICLIN-LIKE ARABINOGALACTAN-PROTEIN 4(SOS5)is a putative cell surface adhesion protein and is required for normal cell expansion. The SOS5 mutant is isolated in a screen for salt hypersensitive mutants. Inthe sos5 mutant, the cell walls are thinner, and those between neighboring epidermal and cortical cells in sos5 roots appear less organized. The Arabidopsis contains five SOS proteins: SOS1 (AT2G01980), SOS2 (AT5G35410), SOS3 (AT5G24270), SOS4 (AT5G37850), SOS5 (AT3G46550).
Synonyms:	SOS5, FASCICLIN-LIKE ARABINOGALACTAN-PROTEIN 4, FLA4, SALT OVERLY SENSITIVE 5
Immunogen:	KLH-conjugated synthetic peptide (15 aa from N terminal section) derived from <i>Arabidopsis thaliana</i> SOS5 (AT3G46550).
Form:	Lyophilized
Quantity:	150 µg
Purification:	Immunogen affinity purified
Reconstitution:	Reconstitution with 150 µl of 0.01M sterile PBS. "Note: please spin tube briefly prior to opening it to avoid any losses that might occur from lyophilized material adhering to the cap or sides of the tube".
Stability & Storage:	Use a manual defrost freezer and avoid repeated freeze-thaw cycles. 12 months from date of receipt, -20 to -70°C as supplied. 6 months, -20 to -70°C under sterile conditions after reconstitution. 1 month, 2 to 8°C under sterile conditions after reconstitution.
Shipping:	The product is shipped at 4°C. Upon receipt, store it immediately at the temperature recommended above.

Application Information

Recommended Dilution:	Western Blot (1:1000-1:2000) Note: Optimal dilutions/concentrations should be determined by the end user.
------------------------------	--

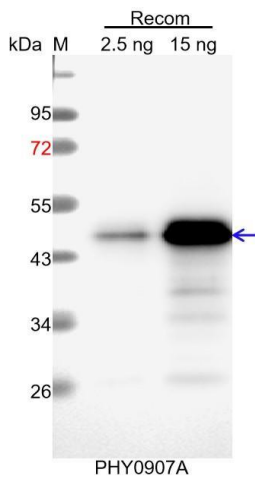
Research Use Only

Expected / apparent MW: 44 kDa

Confirmed Reactivity: Coming soon

Predicted Reactivity: Among species analyzed, the sequence of the synthetic peptide used for immunization is 80-99% homologues with the sequence in *Brassica rapa*, *Brassica napus*.
For more species homologues information, please contact tech support at tech@phytoab.com.

Application Example



Recom: 2.5 ng and 15 ng recombinant protein containing the peptide for immunization and having a molecular mass of 45 kDa.

Electrophoresis: 15% SDS-PAGE

Transfer: blotting to NC (nitrocellulose) membrane for 1 h.

Blocking: 5% skim milk at RT or 4°C for 1 h.

Primary antibody: 1:1000 dilution overnight at 4°C.

Secondary antibody: 1:10000 dilution using Goat Anti-Rabbit IgG &L (HRP) (Cat# PHY6000).

Detection: using chemiluminescence substrate and image were captured with CCD camera.