

Anti-Dehydroascorbate Reductase 1 antibody

Catalog: PHY1145A

Product Information

Description:	Rabbit polyclonal antibody
Background:	Dehydroascorbate Reductase 1 (DHAR1) is a member of the dehydroascorbate reductase gene family. It is critical for a mutualistic symbiosis between the host <i>Arabidopsis</i> and the root colonizing fungus <i>Piriformospora indica</i> .
Synonyms:	DHAR1, ATDHAR1, DEHYDROASCORBATE REDUCTASE, DEHYDROASCORBATE REDUCTASE 5, DHAR5
Immunogen:	KLH-conjugated synthetic peptide (14 aa from N terminal section) derived from <i>Arabidopsis thaliana</i> DHAR1 (AT1G19570).
Form:	Lyophilized
Quantity:	150 µg
Purification:	Immunogen affinity purified
Reconstitution:	Reconstitution with 150 µl of 0.01 M sterile PBS. "Note: please spin tube briefly prior to opening it to avoid any losses that might occur from lyophilized material adhering to the cap or sides of the tube".
Stability & Storage:	Use a manual defrost freezer and avoid repeated freeze-thaw cycles. 12 months from date of receipt, -20 to -70°C as supplied. 6 months, -20 to -70°C under sterile conditions after reconstitution. 1 month, 2 to 8°C under sterile conditions after reconstitution.
Shipping:	The product is shipped at 4°C. Upon receipt, store it immediately at the temperature recommended above.

Application Information

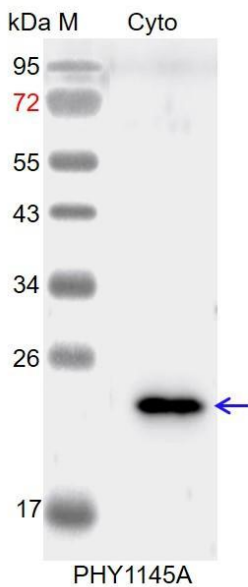
Recommended Dilution:	Western Blot (1:1000-1:2000) Note: Optimal dilutions/concentrations should be determined by the end user.
Expected / apparent MW:	24 kDa
Confirmed Reactivity:	<i>Arabidopsis thaliana</i>
Predicted Reactivity:	Among species analyzed, the sequence of the synthetic peptide used for immunization is 80-99% homologues with the sequence in

Research Use Only

Sorghum bicolor, *Zea mays*, *Brassica napus*, *Brassica rapa*, *Setaria viridis*, *Spinacia oleracea*, *Solanum lycopersicum*, *Solanum tuberosum*, *Panicum virgatum*, *Populus trichocarpa*, *Glycine max*, *Nicotiana tabacum*, *Gossypium raimondii*, *Cucumis sativus*, *Vitis vinifera*.

For more species homologues information, please contact tech support at tech@phytoab.com.

Application Example



Cyto: 15 µl cytosolic protein from *Arabidopsis thaliana*.

Electrophoresis: 15% SDS-PAGE

Transfer: blotting to NC (nitrocellulose) membrane for 1 h.

Blocking: 5% skim milk at RT or 4°C for 1 h.

Primary antibody: 1:2000 dilution overnight at 4°C.

Secondary antibody: 1:10000 dilution using Goat Anti-Rabbit IgG H&L(HRP) (Cat# PHY6000).

Detection: using chemiluminescence substrate and image were captured with CCD camera.