

# Anti-NADH dehydrogenase subunit 17.2 kD, mitochondrial, C-terminal antibody

Catalog: PHY0539A

## Product Information

<b>Description:</b>	Rabbit polyclonal antibody
<b>Background:</b>	Complex I is the largest protein complex of the oxidative phosphorylation system in mitochondrial and it catalyzes NADH-quinone oxidoreduction. Complex I represents the main entrance site for electrons into the respiratory electron transfer chain. In <i>Arabidopsis</i> , Complex I have at least 49 subunits and 17.2 kD subunit (AT3G03100) may be one of the subunit.
<b>Synonyms:</b>	17.2kD Subunit, B17.2
<b>Immunogen:</b>	KLH-conjugated synthetic peptide (15 aa from C terminal section) derived from <i>Arabidopsis thaliana</i> 17.2kD Subunit (AT3G03100).
<b>Form:</b>	Lyophilized
<b>Quantity:</b>	150 µg
<b>Purification:</b>	Immunogen affinity purified
<b>Reconstitution:</b>	Reconstitution with 150 µl of 0.01M sterile PBS. "Note: please spin tube briefly prior to opening it to avoid any losses that might occur from lyophilized material adhering to the cap or sides of the tube".
<b>Stability &amp; Storage:</b>	Use a manual defrost freezer and avoid repeated freeze-thaw cycles. 12 months from date of receipt, -20 to -70°C as supplied. 6 months, -20 to -70°C under sterile conditions after reconstitution. 1 month, 2 to 8°C under sterile conditions after reconstitution.
<b>Shipping:</b>	The product is shipped at 4°C. Upon receipt, store it immediately at the temperature recommended above.

## Application Information

<b>Recommended Dilution:</b>	Western Blot (1:1000-1:2000) Note: Optimal dilutions/concentrations should be determined by the end user.
<b>Expected / apparent MW:</b>	18 / 16 kDa
<b>Confirmed Reactivity:</b>	<i>Arabidopsis thaliana</i>

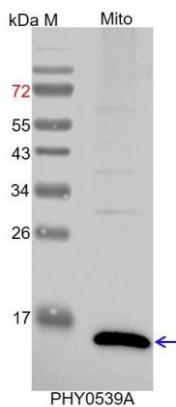
Research Use Only

**Predicted Reactivity:**

Among species analyzed, the sequence of the synthetic peptide used for immunization is 100% homologues with the sequence in *Brassica napus*, *Brassica rapa*, and 80-99% homologues with the sequence in *Populus trichocarpa*, *Medicago truncatula*, *Glycine max*.

For more species homologues information, please contact tech support at [tech@phytoab.com](mailto:tech@phytoab.com).

**Application Example**



Mito: 10 µg mitochondria protein from *Arabidopsis thaliana*.

**Electrophoresis:** 15% SDS-PAGE

**Transfer:** blotting to NC (nitrocellulose) membrane for 1 h.

**Blocking:** 5% skim milk at RT or 4°C for 1 h.

**Primary antibody:** 1:2000 dilution overnight at 4°C.

**Secondary antibody:** 1:10000 dilution using Goat Anti-Rabbit IgG H&L (HRP)

(Cat# PHY6000)

**Detection:** using chemiluminescence substrate and image were captured with CCD camera.