

Anti-AT3G12260 protein, mitochondrial antibody

Catalog: PHY0535A

Product Information

Description:	Rabbit polyclonal antibody
Background:	Complex I is the largest protein complex of the oxidative phosphorylation system in mitochondrial and it catalyzes NADH-quinone oxidoreduction. Complex I represents the main entrance site for electrons into the respiratory electron transfer chain. In Arabidopsis, Complex I have at least 49 subunits and AT3G12260 may be one of the subunit or a biogenesis factor of Complex I.
Synonyms:	AT3G12260
Immunogen:	KLH-conjugated synthetic peptide (15 aa from Central section) derived from <i>Arabidopsis thaliana</i> AT3G12260.
Form:	Lyophilized
Quantity:	150 µg
Purification:	Immunogen affinity purified
Reconstitution:	Reconstitution with 150 µl of 0.01 M sterile PBS. "Note: please spin tube briefly prior to opening it to avoid any losses that might occur from lyophilized material adhering to the cap or sides of the tube".
Stability &Storage:	Use a manual defrost freezer and avoid repeated freeze-thaw cycles. 12 months from date of receipt, -20 to -70°C as supplied. 6 months, -20 to -70°C under sterile conditions after reconstitution. 1 month, 2 to 8°C under sterile conditions after reconstitution.
Shipping:	The product is shipped at 4°C. Upon receipt, store it immediately at the temperature recommended above.

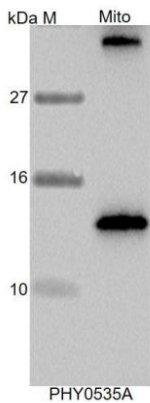
Application Information

Recommended Dilution:	Western Blot (1:1000-1:2000) Note: Optimal dilutions/concentrations should be determined by the end user.
Expected / apparent MW:	15 / 14 kDa
Confirmed Reactivity:	<i>Arabidopsis thaliana</i>
Predicted Reactivity:	Among species analyzed, the sequence of the synthetic peptide used for immunization is 100% homologues with the sequence in <i>Brassica</i>

Research Use Only

rapa, *Brassica napus*, and 80-99% homologues with the sequence in *Sorghum bicolor*, *Panicum virgatum*, *Setaria viridis*, *Gossypium raimondii*, *Zea mays*, *Nicotiana tabacum*, *Solanum tuberosum*. For more species homologues information, please contact tech support at tech@phytoab.com.

Application Example



Mito: 10 μ g mitochondria protein from *Arabidopsis thaliana*.

Electrophoresis: Tricine-SDS-PAGE

Transfer: blotting to NC (nitrocellulose) membrane for 1 h.

Blocking: 5% skim milk at RT or 4°C for 1 h.

Primary antibody: 1:2000 dilution overnight at 4°C.

Secondary antibody: 1:10000 dilution using Goat Anti-Rabbit IgG H&L (HRP)
(Cat# PHY6000)

Detection: using chemiluminescence substrate and image were captured with CCD camera.