

Anti-Chaperonin 60 subunit beta 1/2, chloroplastic antibody

Catalog: PHY0372A

Product Information

Description:	Rabbit polyclonal antibody
Background:	Type I chaperonins are large, double ring complexes involved in mediating the folding of unfolded proteins. In chloroplasts, chaperonin complex is designated Cpn60 complex. In Arabidopsis, two Cpn60 α subunits and four Cpn60 β subunits are present. Cpn60 β 1 (AT1G55490) and Cpn60 β 2 (AT3G13470) is the main Cpn60 β subunit in chloroplasts. This antibody recognizes both proteins.
Synonyms:	CPN60B1/2
Immunogen:	KLH-conjugated synthetic peptide (15 aa from C terminal section) derived from <i>Arabidopsis thaliana</i> CPN60B1 (AT1G55490), CPN60B2 (AT3G13470).
Form:	Lyophilized
Quantity:	150 μ g
Purification:	Immunogen affinity purified
Reconstitution:	Reconstitution with 150 μ l of 0.01 M sterile PBS. "Note: please spin tube briefly prior to opening it to avoid any losses that might occur from lyophilized material adhering to the cap or sides of the tube".
Stability &	Use a manual defrost freezer and avoid repeated freeze-thaw cycles.
Storage:	12 months from date of receipt, -20 to -70°C as supplied. 6 months, -20 to -70°C under sterile conditions after reconstitution. 1 month, 2 to 8°C under sterile conditions after reconstitution.
Shipping:	The product is shipped at 4°C. Upon receipt, store it immediately at the temperature recommended above.

Application Information

Recommended Dilution:	Western Blot (1:1000-1:2000) Note: Optimal dilutions/concentrations should be determined by the end user.
Expected / apparent MW:	64 / 58 kDa

Research Use Only

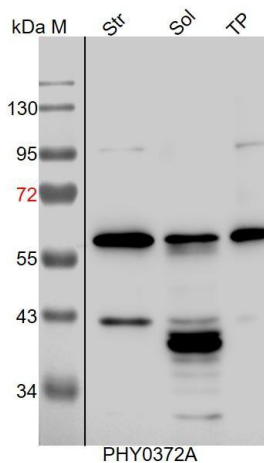
Confirmed Reactivity:

Arabidopsis thaliana

Predicted Reactivity:

Among analyzed species, the sequence of the synthetic peptide used for immunization is 100% homologues with the sequence in *Brassica napus*, *Brassica rapa*, and 80-99% homologues with the sequence in *Solanum tuberosum*, *Solanum lycopersicum*, *Triticum aestivum*, *Gossypium raimondii*, *Populus trichocarpa*, *Medicago truncatula*, *Hordeum vulgare*, *Cucumis sativus*, *Glycine max*, *Vitis vinifera*. For more species homologues information, please contact tech support at tech@phytoab.com.

Application Example



Str: 12 µg stromal protein from *Arabidopsis thaliana*.

Sol: 30 µg soluble protein from *Arabidopsis thaliana*.

TP: 20 µg total protein from *Arabidopsis thaliana*.

Electrophoresis: 12% SDS- PAGE

Transfer: blotting to NC (nitrocellulose) membrane for 1 h.

Blocking: 5% skim milk at RT or 4°C for 1 h.

Primary antibody: 1:1000 dilution overnight at 4°C.

Secondary antibody: 1:10000 dilution using Goat Anti-Rabbit IgG

H&L (HRP) (Cat# PHY6000)

Detection: using chemiluminescence substrate and image were captured with CCD camera.