

Anti-Glutamate dehydrogenase 1/3 antibody

Catalog: PHY0999S

Product Information

Description:	Rabbit polyclonal antibody
Background:	In higher plants, NAD(H)-glutamate dehydrogenase (GDH; EC 1.4.1.2) is an abundant enzyme that exists in different isoenzymic forms. In <i>Arabidopsis thaliana</i> , three genes (<i>Gdh1</i> , <i>Gdh2</i> and <i>Gdh3</i>) encode three different GDH subunits (β (AT5G0744), α (AT5G18170) and γ (AT3G03910)) that randomly associate to form a complex array of homo- and heterohexamers.
Synonyms:	GDH1/3, GLUTAMATE DEHYDROGENASE 1/3
Immunogen:	KLH-conjugated synthetic peptide (16 aa from N terminal section) derived from <i>Arabidopsis thaliana</i> GDH1 (AT5G18170) and GDH3 (AT3G03910).
Form:	Lyophilized
Quantity:	150 μ g
Purification:	Serum Peptide affinity form antibody available upon request at info@phytoab.com .
Reconstitution:	Reconstitution with 150 μ l of sterile water. "Note: please spin tube briefly prior to opening it to avoid any losses that might occur from lyophilized material adhering to the cap or sides of the tube".
Stability & Storage:	Use a manual defrost freezer and avoid repeated freeze-thaw cycles. 12 months from date of receipt, -20 to -70°C as supplied. 6 months, -20 to -70°C under sterile conditions after reconstitution. 1 month, 2 to 8°C under sterile conditions after reconstitution.
Shipping:	The product is shipped at 4°C. Upon receipt, store it immediately at the temperature recommended above.

Application Information

Recommended Dilution:	Western Blot (1:1000-1:2000) Note: Optimal dilutions/concentrations should be determined by the end user.
Expected / apparent MW:	45 / 43 kDa
Confirmed Reactivity:	<i>Arabidopsis thaliana</i>

Research Use Only

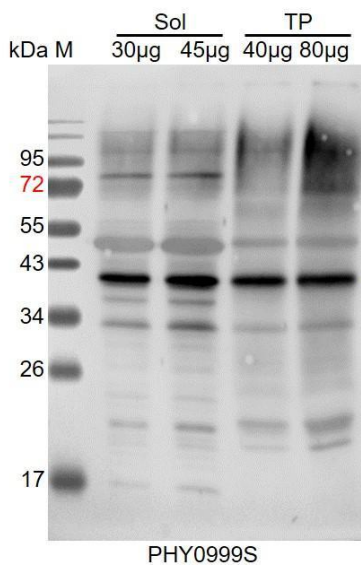
Predicted Reactivity:

Among species analyzed, the sequence of the synthetic peptide used for immunization is 100% homologues with the sequence in *Brassica napus*, *Brassica rapa*, *Medicago truncatula*, *Vitis vinifera*, *Triticum aestivum*, *Glycine max*, *Zea mays*, *Populus trichocarpa*, *Hordeum vulgare subsp. vulgare*, *Nicotiana tabacum*, *Oryza sativa*, *Spinacia oleracea*, *Cucumis sativus*, *Solanum tuberosum*, *Panicum virgatum*, *Gossypium raimondii*, *Solanum lycopersicum*, *Setaria viridis*, *Sorghum bicolor*.

The sequence of the synthetic peptide used for immunization is 93% homologues with the sequence in GDH2 (AT5G07440).

For more species homologues information, please contact tech support at tech@phytoab.com.

Application Example



Sol: 30 µg and 45 µg soluble protein from *Arabidopsis thaliana*, respectively.

TP: 40 µg and 80 µg total protein from *Arabidopsis thaliana*, respectively.

Electrophoresis: 15% SDS-PAGE

Transfer: blotting to NC (nitrocellulose) membrane for 1 h.

Blocking: 5% skim milk at RT or 4°C for 1 h.

Primary antibody: 1:1000 dilution overnight at 4°C.

Secondary antibody: 1:10000 dilution using Goat Anti-Rabbit IgG H&L(HRP) (Cat# PHY6000).

Detection: using chemiluminescence substrate and image were captured with CCD camera.