

Anti-PsbX subunit of Photosystem II, C-terminal antibody

Catalog: PHY0112A

Product Information

Description:	Rabbit polyclonal antibody
Background:	PsbX is a small subunit of PSII that has a molecular mass of 4.2 kDa. PsbX is a nuclear encoded small subunit associated with Photosystem II and found in all classes of oxygenic organisms. PsbX may play some role in QA functioning.
Synonyms:	PsbX, Photosystem II subunit X
Immunogen:	KLH-conjugated synthetic peptide (15 aa from C terminal section) derived from <i>Arabidopsis thaliana</i> PsbX (AT2G06520).
Form:	Lyophilized
Quantity:	150 µg
Purification:	Immunogen affinity purified
Reconstitution:	Reconstitution with 150 µl of 0.01 M sterile PBS. "Note: please spin tube briefly prior to opening it to avoid any losses that might occur from lyophilized material adhering to the cap or sides of the tube".
Stability & Storage:	Use a manual defrost freezer and avoid repeated freeze-thaw cycles. 12 months from date of receipt, -20 to -70°C as supplied. 6 months, -20 to -70°C under sterile conditions after reconstitution. 1 month, 2 to 8°C under sterile conditions after reconstitution.
Shipping:	The product is shipped at 4°C. Upon receipt, store it immediately at the temperature recommended above.

Application Information

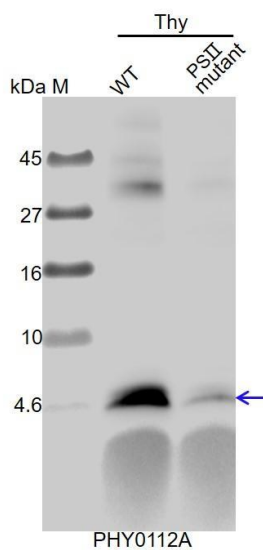
Recommended Dilution:	Western Blot (1:1000-1:2000) Note: Optimal dilutions/concentrations should be determined by the end user.
Expected / apparent MW:	12 / 6 kDa
Confirmed Reactivity:	<i>Arabidopsis thaliana</i>
Predicted Reactivity:	Among species analyzed, the sequence of the synthetic peptide used for immunization is 80-99% homologues with the sequence in <i>Brassica rapa</i> , <i>Brassica napus</i> , <i>Medicago truncatula</i> , <i>Gossypium raimondii</i> ,

Research Use Only

Glycine max, Nicotiana tabacum, Oryza sativa, Solanum lycopersicum, Triticum aestivum, Hordeum vulgare, Solanum tuberosum, Solanum lycopersicum, Vitis vinifera, Cucumis sativus, Populus trichocarpa, Panicum virgatum, Zea mays, Sorghum bicolor, Setaria viridis, Spinacia oleracea.

For more species homologues information, please contact tech support at tech@phytoab.com.

Application Example



Thy-WT: thylakoid membrane protein from WT of *Arabidopsis thaliana* leaf containing 2.5 µg of chlorophyll.

Thy-PS II mutant: thylakoid membrane protein from an *Arabidopsis* mutant with low accumulation of PS II containing 2.5 µg of chlorophyll.

Electrophoresis: Tricine-SDS-PAGE

Transfer: blotting to NC (nitrocellulose) membrane for 1 h.

Blocking: 5% skim milk at RT or 4°C for 1 h.

Primary antibody: 1:2000 dilution overnight at 4°C.

Secondary antibody: 1:10000 dilution using Goat Anti-Rabbit IgG

H&L(HRP) (Cat# PHY6000).

Detection: using chemiluminescence substrate and image were captured with CCD camera.