

Anti-PsbP subunit of oxygen evolving complex of Photosystem II antibody

Catalog: PHY2363A

Product Information

| | |
|---------------------------------|---|
| Description: | Rabbit polyclonal antibody |
| Background: | PsbP is a 23 kD extrinsic subunit of the oxygen evolving complex of Photosystem II. PsbP participates in the regulation of oxygen evolution and stabilizes the oxygen evolving complex of PSII. |
| Synonyms: | PsbP |
| Immunogen: | KLH-conjugated synthetic peptide (16 aa from C terminal section) derived from <i>Arabidopsis thaliana</i> PsbP1 (AT1G06680) and PsbP2 (AT2G30790). |
| Form: | Lyophilized |
| Quantity: | 150 µg |
| Purification: | Immunogen affinity purified |
| Reconstitution: | Reconstitution with 150 µl of 0.01 M sterile PBS. "Note: please spin tube briefly prior to opening it to avoid any losses that might occur from lyophilized material adhering to the cap or sides of the tube". |
| Stability & Storage: | Use a manual defrost freezer and avoid repeated freeze-thaw cycles. 12 months from date of receipt, -20 to -70°C as supplied. 6 months, -20 to -70°C under sterile conditions after reconstitution. 1 month, 2 to 8°C under sterile conditions after reconstitution. |
| Shipping: | The product is shipped at 4°C. Upon receipt, store it immediately at the temperature recommended above. |

Application Information

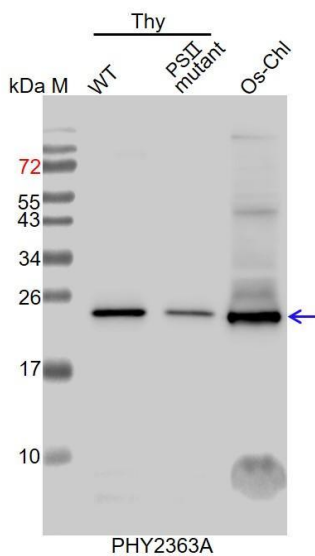
| | |
|--------------------------------|---|
| Recommended Dilution: | Western Blot (1:1000-1:2000) Note: Optimal dilutions/concentrations should be determined by the end user. |
| Expected / apparent MW: | 28kDa (AT1G06680), 13kDa (AT2G30790) / 24 kDa |
| Confirmed Reactivity: | <i>Arabidopsis thaliana</i> , <i>Oryza sativa</i> |
| Predicted Reactivity: | Among species analyzed, the sequence of the synthetic peptide used for immunization is 100% homologous with the sequence in <i>Brassica</i> |

Research Use Only

napus, *Brassica rapa*, *Panicum virgatum*, *Vitis vinifera*, *Gossypium raimondii*, *Glycine max*, *Cucumis sativus*, *Populus trichocarpa*, *Medicago truncatula*, *Sorghum bicolor*, *Setaria viridis*, *Solanum tuberosum*, *Hordeum vulgare*, *Triticum aestivum*, *Solanum lycopersicum*, *Zea mays*, *Oryza sativa*, and 80-99% homologues with the sequence in *Nicotiana tabacum*, *Physcomitrella patens*, *Spinacia oleracea*.

For more species homologues information, please contact tech support at tech@phytoab.com.

Application Example



Thy-WT: thylakoid membrane protein from WT of *Arabidopsis thaliana* containing 0.5 μ g of chlorophyll.

Thy-PS II : thylakoid membrane protein from an Arabidopsis mutant with low accumulation of PS II containing 0.5 μ g of chlorophyll.

Os-Chl: 5 μ l total chloroplast protein from *Oryza sativa*.

Electrophoresis: 15% SDS-PAGE

Transfer: blotting to NC (nitrocellulose) membrane for 1 h.

Blocking: 5% skim milk at RT or 4°C for 1 h.

Primary antibody: 1:2000 dilution overnight at 4°C.

Secondary antibody: 1:10000 dilution using Goat Anti-Rabbit IgG H&L(HRP) (Cat# PHY6000).

Detection: using chemiluminescence substrate and image were captured with CCD camera.