

Anti-2-methyl-6-phytyl-1,4-hydroquinone methyltransferase, chloroplastic antibody

Catalog: PHY2763S

Product Information

Description:	Rabbit polyclonal antibody
Background:	VTE3 is a MPBQ/MSBQ methyltransferase located in the chloroplast inner envelope membrane. It is involved in a key methylation step in both tocopherols (vitamin E) and plastoquinone synthesis.
Synonyms:	VTE3, ALBINO OR PALE GREEN MUTANT 1, APG1, E37, IEP37, INNER ENVELOPE PROTEIN 37, VITAMIN E DEFECTIVE 3
Immunogen:	KLH-conjugated synthetic peptide (16 aa from C terminal section) derived from <i>Arabidopsis thaliana</i> VTE3 (AT3G63410).
Form:	Lyophilized
Quantity:	150 µg
Purification:	Serum Peptide affinity form antibody available upon request at info@phytoab.com .
Reconstitution:	Reconstitution with 150 µl of sterile water. "Note: please spin tube briefly prior to opening it to avoid any losses that might occur from lyophilized material adhering to the cap or sides of the tube".
Stability & Storage:	Use a manual defrost freezer and avoid repeated freeze-thaw cycles. 12 months from date of receipt, -20 to -70°C as supplied. 6 months, -20 to -70°C under sterile conditions after reconstitution. 1 month, 2 to 8°C under sterile conditions after reconstitution.
Shipping:	The product is shipped at 4°C. Upon receipt, store it immediately at the temperature recommended above.

Application Information

Recommended Dilution:	Western Blot (1:1000-1:5000) Note: Optimal dilutions/concentrations should be determined by the end user.
Expected / apparent MW:	38 / 34 kDa
Confirmed Reactivity:	<i>Arabidopsis thaliana</i>

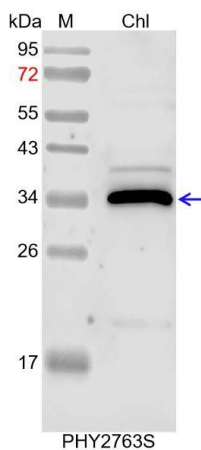
Research Use Only

Predicted Reactivity:

Among species analyzed, the sequence of the synthetic peptide used for immunization is 100% homologues with the sequence in *Oryza sativa*, *Glycine max*, *Triticum aestivum*, *Panicum virgatum*, *Zea mays*, *Sorghum bicolor*, *Medicago truncatula*, *Setaria viridis*, *Hordeum vulgare*, *Spinacia oleracea*, *Populus trichocarpa*, *Gossypium raimondii*, *Vitis vinifera*, *Solanum tuberosum*, *Brassica napus*, *Nicotiana tabacum*, *Solanum lycopersicum*, *Chlamydomonas reinhardtii*, *Brassica rapa*, *Cucumis sativus*, and 80-99% homologues with the sequence in *Physcomitrium patens*.

For more species homologues information, please contact tech support at tech@phytoab.com.

Application Example



Chl: 10 μ l total chloroplast protein from *Arabidopsis thaliana*.

Electrophoresis: 15% SDS-PAGE

Transfer: blotting to NC (nitrocellulose) membrane for 1 h.

Blocking: 5% skim milk at RT or 4°C for 1 h.

Primary antibody: 1:5000 dilution overnight at 4°C.

Secondary antibody: 1:10000 dilution using Goat Anti-Rabbit IgG &L (HRP) (Cat# PHY6000).

Detection: using chemiluminescence substrate and image were captured with CCD camera.