

# Anti-2-methyl-6-phytyl-1,4-hydroquinone methyltransferase, chloroplastic antibody

Catalog: PHY2762S

## Product Information

<b>Description:</b>	Rabbit polyclonal antibody
<b>Background:</b>	VTE3 is a MPBQ/MSBQ methyltransferase located in the chloroplast inner envelope membrane. It is involved in a key methylation step in both tocopherols (vitamin E) and plastoquinone synthesis.
<b>Synonyms:</b>	VTE3, ALBINO OR PALE GREEN MUTANT 1, APG1, E37, IEP37, INNER ENVELOPE PROTEIN 37, VITAMIN E DEFECTIVE 3
<b>Immunogen:</b>	KLH-conjugated synthetic peptide (17 aa from N terminal section) derived from <i>Arabidopsis thaliana</i> VTE3 (AT3G63410).
<b>Form:</b>	Lyophilized
<b>Quantity:</b>	150 µg
<b>Purification:</b>	Serum Peptide affinity form antibody available upon request at <a href="mailto:info@phytoab.com">info@phytoab.com</a> .
<b>Reconstitution:</b>	Reconstitution with 150 µl of sterile water. "Note: please spin tube briefly prior to opening it to avoid any losses that might occur from lyophilized material adhering to the cap or sides of the tube".
<b>Stability &amp; Storage:</b>	Use a manual defrost freezer and avoid repeated freeze-thaw cycles. 12 months from date of receipt, -20 to -70°C as supplied. 6 months, -20 to -70°C under sterile conditions after reconstitution. 1 month, 2 to 8°C under sterile conditions after reconstitution.
<b>Shipping:</b>	The product is shipped at 4°C. Upon receipt, store it immediately at the temperature recommended above.

## Application Information

<b>Recommended Dilution:</b>	Western Blot (1:1000-1:5000) Note: Optimal dilutions/concentrations should be determined by the end user.
<b>Expected / apparent MW:</b>	38 / 34 kDa
<b>Confirmed Reactivity:</b>	<i>Arabidopsis thaliana</i>

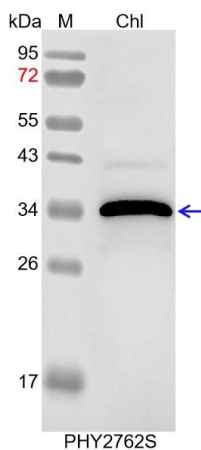
Research Use Only

### Predicted Reactivity:

Among species analyzed, the sequence of the synthetic peptide used for immunization is 100% homologues with the sequence in *Triticum aestivum*, *Panicum virgatum*, *Zea mays*, *Oryza sativa*, *Setaria viridis*, *Hordeum vulgare*, *Spinacia oleracea*, *Glycine max*, *Gossypium raimondii*, *Vitis vinifera*, *Solanum tuberosum*, *Medicago truncatula*, *Solanum lycopersicum*, *Brassica napus*, *Brassica rapa*, and 80-99% homologues with the sequence in *Physcomitrium patens*, *Sorghum bicolor*, *Populus trichocarpa*, *Chlamydomonas reinhardtii*, *Cucumis sativus*, *Nicotiana tabacum*.

For more species homologues information, please contact tech support at [tech@phytoab.com](mailto:tech@phytoab.com).

### Application Example



Chl: 10  $\mu$ l total chloroplast protein from *Arabidopsis thaliana*.

**Electrophoresis:** 15% SDS-PAGE

**Transfer:** blotting to NC (nitrocellulose) membrane for 1 h.

**Blocking:** 5% skim milk at RT or 4°C for 1 h.

**Primary antibody:** 1:5000 dilution overnight at 4°C.

**Secondary antibody:** 1:10000 dilution using Goat Anti-Rabbit IgG &L (HRP) (Cat# PHY6000).

**Detection:** using chemiluminescence substrate and image were captured with CCD camera.