

# Anti-Receptor for activated C kinase 1A antibody

Catalog: PHY0759S

## Product Information

<b>Description:</b>	Rabbit polyclonal antibody
<b>Background:</b>	RACK1 has been proved to regulate plant hormone signaling, stress responses and multiple processes during plant growth and development. It is a scaffold protein that acts downstream of and is phosphorylated by WNK8 in the glucose responsiveness and flowering pathways. In Arabidopsis, a total of three RACK proteins were found: AT1G18080 (RACK1A), AT1G48630 (RACK1B) and AT3G18130 (RACK1C).
<b>Synonyms:</b>	RACK1A, ATARCA, ATRACK1, RACK1A_AT, RECEPTOR FOR ACTIVATED C KINASE 1 A, SAC53, SUPPRESSOR OF ACAULIS 53
<b>Immunogen:</b>	KLH-conjugated synthetic peptide (19 aa from C terminal section) derived from <i>Arabidopsis thaliana</i> RACK1A (AT1G18080).
<b>Form:</b>	Lyophilized
<b>Quantity:</b>	150 µg
<b>Purification:</b>	Serum Peptide affinity form antibody available upon request at <a href="mailto:info@phytoab.com">info@phytoab.com</a> .
<b>Reconstitution:</b>	Reconstitution with 150 µl of sterile water. "Note: please spin tube briefly prior to opening it to avoid any losses that might occur from lyophilized material adhering to the cap or sides of the tube".
<b>Stability &amp; Storage:</b>	Use a manual defrost freezer and avoid repeated freeze-thaw cycles. 12 months from date of receipt, -20 to -70°C as supplied. 6 months, -20 to -70°C under sterile conditions after reconstitution. 1 month, 2 to 8°C under sterile conditions after reconstitution.
<b>Shipping:</b>	The product is shipped at 4°C. Upon receipt, store it immediately at the temperature recommended above.

## Application Information

<b>Recommended Dilution:</b>	Western Blot (1:1000-1:2000) Note: Optimal dilutions/concentrations should be determined by the end user.
<b>Expected / apparent MW:</b>	36 kDa

Research Use Only

**Confirmed Reactivity:**

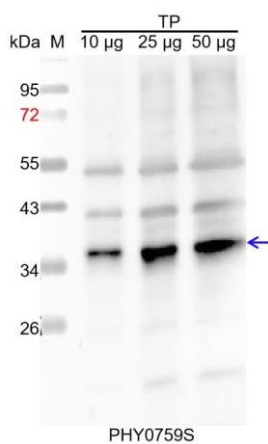
*Arabidopsis thaliana*

**Predicted Reactivity:**

Among species analyzed, the sequence of the synthetic peptide used for immunization is 80-99% homologues with the sequence in *Brassica rapa*, *Brassica napus*.

For more species homologues information, please contact tech support at [tech@phytoab.com](mailto:tech@phytoab.com).

## Application Example



TP: 10 µg, 25 µg and 50 µg total protein from *Arabidopsis thaliana*, respectively.

**Electrophoresis:** 15% SDS-PAGE

**Transfer:** blotting to NC (nitrocellulose) membrane for 1 h.

**Blocking:** 5% skim milk at RT or 4°C for 1 h.

**Primary antibody:** 1:1000 dilution overnight at 4°C.

**Secondary antibody:** 1:10000 dilution using Goat Anti-Rabbit IgG H&L (HRP) (Cat# PHY6000).

**Detection:** using chemiluminescence substrate and image were captured with CCD camera.