

Anti-ASK alpha, N-terminal antibody

Catalog: PHY0756S

Product Information

Description:	Rabbit polyclonal antibody
Background:	ASK α (AT5G26751) is a stress-activated GSK3 protecting cell against oxidative stress. It has been shown that glucose-6-phosphate dehydrogenase 6 (AT5G40760) is the target of ASK α .
Synonyms:	ASK1, ARABIDOPSIS GSK ALPHA, ARABIDOPSIS THALIANA SHAGGY-RELATED KINASE 11, ASKALPHA, ATSK11, SHAGGY-RELATED KINASE 11, SK 11, ASK α
Immunogen:	KLH-conjugated synthetic peptide (14 aa from N terminal section) derived from <i>Arabidopsis thaliana</i> ASK1 (AT5G26751).
Form:	Lyophilized
Quantity:	150 μ g
Purification:	Serum Peptide affinity form antibody available upon request at info@phytoab.com .
Reconstitution:	Reconstitution with 150 μ l of sterile water. "Note: please spin tube briefly prior to opening it to avoid any losses that might occur from lyophilized material adhering to the cap or sides of the tube".
Stability & Storage:	Use a manual defrost freezer and avoid repeated freeze-thaw cycles. 12 months from date of receipt, -20 to -70°C as supplied. 6 months, -20 to -70°C under sterile conditions after reconstitution. 1 month, 2 to 8°C under sterile conditions after reconstitution.
Shipping:	The product is shipped at 4°C. Upon receipt, store it immediately at the temperature recommended above.

Application Information

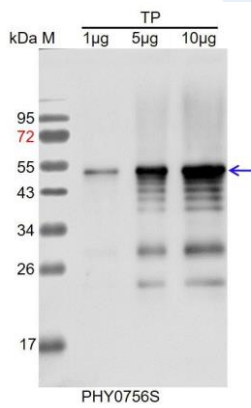
Recommended Dilution:	Western Blot (1:1000-1:2000) Note: Optimal dilutions/concentrations should be determined by the end user.
Expected / apparent MW:	46 kDa
Confirmed Reactivity:	<i>Arabidopsis thaliana</i>

Research Use Only

Predicted Reactivity:

For more species homologues information, please contact tech support at tech@phytoab.com.

Application Example



TP: 1 μ g, 5 μ g and 10 μ g total protein from *Arabidopsis thaliana*, respectively.

Electrophoresis: 15% SDS-PAGE

Transfer: blotting to NC (nitrocellulose) membrane for 1 h.

Blocking: 5% skim milk at RT or 4°C for 1 h.

Primary antibody: 1:1000 dilution overnight at 4°C.

Secondary antibody: 1:10000 dilution using Goat Anti-Rabbit IgG H&L(HRP) (Cat# PHY6000).

Detection: using chemiluminescence substrate and image were captured with CCD camera.