

Anti-RNA1 polyprotein antibody

Catalog: PHY3020S

Product Information

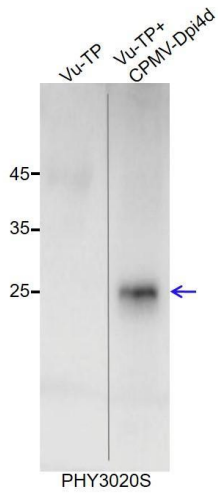
Description:	Rabbit polyclonal antibody
Background:	24Kpro
Synonyms:	24Kpro
Immunogen:	Recombinant protein of 24Kpro (1-208aa) derived from <i>Cowpea mosaic virus</i> NP_734056.1.
Form:	Lyophilized
Quantity:	150 µg
Purification:	Serum
Reconstitution:	Reconstitution with 150 µl of sterile water. "Note: please spin tube briefly prior to opening it to avoid any losses that might occur from lyophilized material adhering to the cap or sides of the tube".
Stability & Storage:	Use a manual defrost freezer and avoid repeated freeze-thaw cycles. 12 months from date of receipt, -20 to -70°C as supplied. 6 months, -20 to -70°C under sterile conditions after reconstitution. 1 month, 2 to 8°C under sterile conditions after reconstitution.
Shipping:	The product is shipped at 4°C. Upon receipt, store it immediately at the temperature recommended above.

Application Information

Recommended Dilution:	Western Blot (1:1000-1:2000) Note: Optimal dilutions/concentrations should be determined by the end user.
Expected / apparent MW:	23 kDa
Confirmed Reactivity:	<i>Vigna unguiculata</i>
Predicted Reactivity:	For more species homologues information, please contact tech support at tech@phytoab.com .

Research Use Only

Application Example



Vu-TP: 5ug total *Vigna unguiculata*(cpa/cpa) healthy leaf protein.

Vu-TP+CPMV-Dpi4d: 10ug total *Vigna unguiculata*(cpa/cpa) leaf protein (CPMV-Dpi4d).

Electrophoresis: 10% SDS-PAGE

Transfer: blotting to PVDF membrane for 30 min.

Blocking: 5% skim milk at RT or 4°C for 1 h.

Primary antibody: 1:1000 dilution overnight at 4°C.

Secondary antibody: 1:10000 dilution using Goat Anti-Rabbit IgG &L (HRP) (Cat# PHY6000).

Detection: using chemiluminescence substrate and image were captured with CCD camera.