

Anti-microtubule-associated protein 65-1/2 antibody

Catalog: PHY2369A

Product Information

Description:	Rabbit polyclonal antibody
Background:	The <i>Arabidopsis thaliana</i> MAP65-1 (AT5G55230) and MAP65-2 (AT4G26760) genes are members of the larger eukaryotic MAP65/ASE1/PRC gene family of microtubule-associated proteins.
Synonyms:	MAP65-1/2, MICROTUBULE-ASSOCIATED PROTEIN 65-1/2, ATMAP65-1/2
Immunogen:	KLH-conjugated synthetic peptide (17 aa from central section) derived from <i>Arabidopsis thaliana</i> MAP65-1 (AT5G55230) and MAP65-2 (AT4G26760).
Form:	Lyophilized
Quantity:	150 µg
Purification:	Immunogen affinity purified
Reconstitution:	Reconstitution with 150 µl of 0.01 M sterile PBS. "Note: please spin tube briefly prior to opening it to avoid any losses that might occur from lyophilized material adhering to the cap or sides of the tube".
Stability & Storage:	Use a manual defrost freezer and avoid repeated freeze-thaw cycles. 12 months from date of receipt, -20 to -70°C as supplied. 6 months, -20 to -70°C under sterile conditions after reconstitution. 1 month, 2 to 8°C under sterile conditions after reconstitution.
Shipping:	The product is shipped at 4°C. Upon receipt, store it immediately at the temperature recommended above.

Application Information

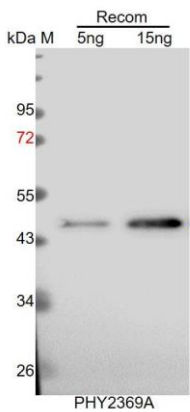
Recommended Dilution:	Western Blot (1:1000-1:2000) Note: Optimal dilutions/concentrations should be determined by the end user.
Expected / apparent MW:	66 kDa
Confirmed Reactivity:	Coming soon
Predicted Reactivity:	Among species analyzed, the sequence of the synthetic peptide used for immunization is 80-99% homologues with the sequence in <i>Vitis vinifera</i> , <i>Glycine max</i> , <i>Nicotiana tabacum</i> , <i>Gossypium raimondii</i> , <i>Medicago truncatula</i> , <i>Solanum tuberosum</i> , <i>Solanum lycopersicum</i> , <i>Populus</i>

Research Use Only

trichocarpa, Cucumis sativus, Brassica rapa, Zea mays, Oryza sativa, Sorghum bicolor, Setaria viridis, Panicum virgatum, Brassica napus, Spinacia oleracea.

For more species homologues information, please contact tech support at tech@phytoab.com.

Application Example



Recom: 5 ng and 15 ng recombinant protein containing the peptide for immunization and having a molecular mass of 50kDa.

Electrophoresis: 12% SDS-PAGE

Transfer: blotting to NC (nitrocellulose) membrane for 1 h.

Blocking: 5% skim milk at RT or 4°C for 1 h.

Primary antibody: 1:1000 dilution overnight at 4°C.

Secondary antibody: 1:10000 dilution using Goat Anti-Rabbit IgG H&L(HRP) (Cat# PHY6000).

Detection: using chemiluminescence substrate and image were captured with CCD camera.