

# Anti-Plant fts metallo-protease H9 antibody

Catalog: PHY0129S

## Product Information

<b>Description:</b>	Rabbit polyclonal antibody
<b>Background:</b>	The <i>Arabidopsis thaliana</i> filamentation temperature sensitive (FtsH) metalloprotease gene family comprises 12 members (AtFtsH1-AtFtsH12), including three pairs of closely related genes that are targeted to chloroplasts (AtFtsH2 and AtFtsH8; AtFtsH1 and AtFtsH5; and AtFtsH7 and AtFtsH9). FtsH proteases are found in eubacteria, animals and plants and are known to have a crucial role in housekeeping proteolysis of membrane proteins.
<b>Synonyms:</b>	FtsH9, FTSH PROTEASE 9
<b>Immunogen:</b>	KLH-conjugated synthetic peptide (15 aa from C terminal section) derived from <i>Arabidopsis thaliana</i> FtsH9 (AT5G58870).
<b>Form:</b>	Lyophilized
<b>Quantity:</b>	150 µg
<b>Purification:</b>	Serum Peptide affinity form antibody available upon request at <a href="mailto:info@phytoab.com">info@phytoab.com</a> .
<b>Reconstitution:</b>	Reconstitution with 150 µl of sterile water. "Note: please spin tube briefly prior to opening it to avoid any losses that might occur from lyophilized material adhering to the cap or sides of the tube".
<b>Stability &amp; Storage:</b>	Use a manual defrost freezer and avoid repeated freeze-thaw cycles. 12 months from date of receipt, -20 to -70°C as supplied. 6 months, -20 to -70°C under sterile conditions after reconstitution. 1 month, 2 to 8°C under sterile conditions after reconstitution.
<b>Shipping:</b>	The product is shipped at 4°C. Upon receipt, store it immediately at the temperature recommended above.

## Application Information

<b>Recommended Dilution:</b>	Western Blot (1:1000-1:5000) Note: Optimal dilutions/concentrations should be determined by the end user.
<b>Expected / apparent MW:</b>	88 / 74 kDa

Research Use Only

**Confirmed Reactivity:**

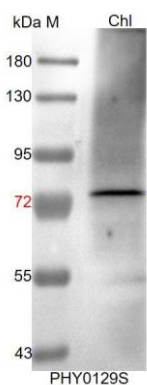
*Arabidopsis thaliana*

**Predicted Reactivity:**

Among species analyzed, the sequence of the synthetic peptide used for immunization is 100% homologues with the sequence in *Sorghum bicolor*, *Zea mays*, *Setaria viridis*, *Panicum virgatum*, *Brassica napus*, *Brassica rapa*, and 80-99% homologues with the sequence in *Oryza sativa Japonica Group*, *Spinacia oleracea*, *Populus trichocarpa*, *Vitis vinifera*, *Gossypium raimondii*, *Glycine max*, *Triticum aestivum*, *Hordeum vulgare subsp. vulgare*, *Nicotiana tabacum*, *Cucumis sativus*, *Solanum tuberosum*, *Solanum lycopersicum*.

For more species homologues information, please contact tech support at [tech@phytoab.com](mailto:tech@phytoab.com).

## Application Example



Chl: 5  $\mu$ l total chloroplast protein from *Arabidopsis thaliana*.

**Electrophoresis:** 10% SDS-PAGE

**Transfer:** blotting to NC (nitrocellulose) membrane for 1 h.

**Blocking:** 5% skim milk at RT or 4°C for 1 h.

**Primary antibody:** 1:5000 dilution overnight at 4°C.

**Secondary antibody:** 1:10000 dilution using Goat Anti-Rabbit IgG H&L(HRP) (Cat# PHY6000).

**Detection:** using chemiluminescence substrate and image were captured with CCD camera.