

Anti-Alpha subunit of chloroplast ATP synthase antibody

Catalog: PHY0010

Product Information

Description:	Rabbit polyclonal antibody
Background:	ATPase alpha subunit, which is a subunit of ATP synthase and part of the CF1 portion which catalyzes the conversion of ADP to ATP using the proton motive force. This complex is located in the thylakoid membrane of the chloroplast.
Synonyms:	AtpA, ATP synthase F1 sector subunit alpha, F-ATPase subunit alpha
Immunogen:	KLH-conjugated synthetic peptide (14 aa from C terminal section) derived from <i>Arabidopsis thaliana</i> AtpA (ATCG00120).
Form:	Lyophilized
Quantity:	150 µg
Purification:	Protein A purified
Reconstitution:	Reconstitution with 150 µl of 0.01 M sterile PBS. "Note: please spin tube briefly prior to opening it to avoid any losses that might occur from lyophilized material adhering to the cap or sides of the tube".
Stability & Storage:	Use a manual defrost freezer and avoid repeated freeze-thaw cycles. 12 months from date of receipt, -20 to -70°C as supplied. 6 months, -20 to -70°C under sterile conditions after reconstitution. 1 month, 2 to 8°C under sterile conditions after reconstitution.
Shipping:	The product is shipped at 4°C. Upon receipt, store it immediately at the temperature recommended above.

Application Information

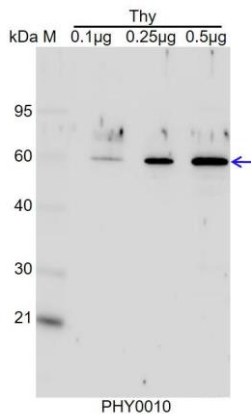
Recommended Dilution:	Western Blot (1:1000-1:2000) Note: Optimal dilutions/concentrations should be determined by the end user.
Expected / apparent MW:	55 / 59 kDa
Confirmed Reactivity:	<i>Arabidopsis thaliana</i>
Predicted Reactivity:	Among species analyzed, the sequence of the synthetic peptide used for immunization is 100% homologous with the sequence in <i>Brassica</i>

Research Use Only

rapa, *Brassica napus*, and 80-99% homologues with the sequence in *Glycine max*, *Vitis vinifera*, *Gossypium raimondii*, *Medicago truncatula*, *Solanum lycopersicum*, *Physcomitrium patens*, *Populus trichocarpa*, *Cucumis sativus*, *Solanum tuberosum*, *Nicotiana tabacum*, *Spinacia oleracea*, *Synechococcus elongatus* PCC 7942, *Chlamydomonas reinhardtii*.

For more species homologues information, please contact tech support at tech@phytoab.com.

Application Example



Thy: thylakoid membrane protein from *Arabidopsis thaliana* containing 0.1 µg, 0.25 µg and 0.5 µg of chlorophyll, respectively.

Electrophoresis: 15% SDS-Urea-PAGE

Transfer: blotting to NC (nitrocellulose) membrane for 1 h.

Blocking: 5% skim milk at RT or 4°C for 1 h.

Primary antibody: 1:1000 dilution overnight at 4°C.

Secondary antibody: 1:20000 dilution using Goat Anti-Rabbit IgG H&L(HRP) (Cat# PHY6000).

Detection: using chemiluminescence substrate and image were captured with CCD camera.