

Anti-Cytochrome f antibody

Catalog: PHY0022S

Product Information

Description:	Rabbit polyclonal antibody
Background:	Cytochrome f is the largest subunit of cytochrome b6f complex. In its structure and functions, the cytochrome b6f complex bears extensive analogy to the cytochrome bc1 complex of mitochondria and photosynthetic purple bacteria. Cytochrome f (cyt f) plays a role analogous to that of cytochrome c1, in spite of their different structures. Multi-subunit complex of cyt b6/f is a crucial component for the photosynthetic electron transport chain of higher plants, green algae and cyanobacteria. This complex is catalyzing oxidation of quinols and the reduction the reduction of plastocyanin.
Synonyms:	PetA, Cytochrome f protein (PetA) of thylakoid Cyt b6/f-complex
Immunogen:	KLH-conjugated synthetic peptide (15 aa from N terminal section) derived from <i>Chlamydomonas reinhardtii</i> PetA.
Form:	Lyophilized
Quantity:	150 µg
Purification:	Serum Peptide affinity form antibody available upon request at info@phytoab.com .
Reconstitution:	Reconstitution with 150 µl of sterile water. "Note: please spin tube briefly prior to opening it to avoid any losses that might occur from lyophilized material adhering to the cap or sides of the tube".
Stability & Storage:	Use a manual defrost freezer and avoid repeated freeze-thaw cycles. 12 months from date of receipt, -20 to -70°C as supplied. 6 months, -20 to -70°C under sterile conditions after reconstitution. 1 month, 2 to 8°C under sterile conditions after reconstitution.
Shipping:	The product is shipped at 4°C. Upon receipt, store it immediately at the temperature recommended above.

Application Information

Recommended Dilution:	Western Blot (1:1000-1:2000) Note: Optimal dilutions/concentrations should be determined by the end user.
------------------------------	--

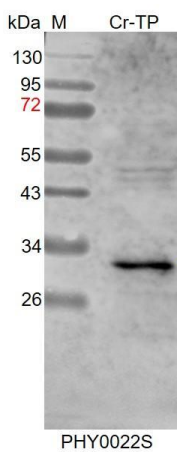
Research Use Only

Expected / apparent MW: 34 / 33 kDa

Confirmed Reactivity: *Chlamydomonas reinhardtii*

Predicted Reactivity: For more species homologues information, please contact tech support at tech@phytoab.com.

Application Example



Cr-TP: 10 µg total protein from *Arabidopsis thaliana*.

Electrophoresis: 15% SDS-PAGE

Transfer: blotting to NC (nitrocellulose) membrane for 1 h.

Blocking: 5% skim milk at RT or 4°C for 1 h.

Primary antibody: 1:2000 dilution overnight at 4°C.

Secondary antibody: 1:10000 dilution using Goat Anti-Rabbit IgG H&L (HRP) (Cat# PHY6000)

Detection: using chemiluminescence substrate and image were captured with CCD camera.