

Anti-BIOGENESIS FACTORS REQUIRED FOR ATP SYNTHASE 3 antibody

Catalog: PHY0308

Product Information

Description:	Rabbit polyclonal antibody
Background:	BIOGENESIS FACTORS REQUIRED FOR ATP SYNTHASE 3 (BFA3, AT2G21385) is a chloroplast stromal protein and is required for the assembly of the chloroplast ATP synthase complex. BFA3 specifically interacts with CF1 β subunit during the formation of the ATP synthase.
Synonyms:	BFA3, ATCGLD11, BIOGENESIS FACTORS REQUIRED FOR ATP SYNTHASE 3, CGLD11, CONSERVED IN THE GREEN LINEAGE AND DIATOMS 11
Immunogen:	Recombinant, mature protein without chloroplast targeting peptide of <i>Arabidopsis thaliana</i> BFA3 (AT2G21385).
Form:	Lyophilized
Quantity:	150 μ g
Purification:	Protein A purified
Reconstitution:	Reconstitution with 150 μ l of 0.01 M sterile PBS. "Note: please spin tube briefly prior to opening it to avoid any losses that might occur from lyophilized material adhering to the cap or sides of the tube".
Stability &	Use a manual defrost freezer and avoid repeated freeze-thaw cycles.
Storage:	12 months from date of receipt, -20 to -70°C as supplied. 6 months, -20 to -70°C under sterile conditions after reconstitution. 1 month, 2 to 8°C under sterile conditions after reconstitution.
Shipping:	The product is shipped at 4°C. Upon receipt, store it immediately at the temperature recommended above.

Application Information

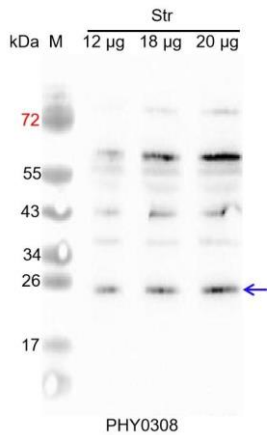
Recommended Dilution:	Western Blot (1:1000-1:2000) Note: Optimal dilutions/concentrations should be determined by the end user.
Expected / apparent MW:	38 / 26 kDa

Research Use Only

Confirmed Reactivity: *Arabidopsis thaliana*

Predicted Reactivity: For more species homologues information, please contact tech support at tech@phytoab.com.

Application Example



Str: 12 µg, 18 µg and 20 µg stromal protein from *Arabidopsis thaliana*, respectively.

Electrophoresis: 15% SDS-Urea-PAGE

Transfer: blotting to NC (nitrocellulose) membrane for 1 h.

Blocking: 5% skim milk at RT or 4°C for 1 h.

Primary antibody: 1:2000 dilution overnight at 4°C.

Secondary antibody: 1:20000 dilution using Goat Anti-Rabbit IgG H&L (HRP) (Cat# PHY6000).

Detection: using chemiluminescence substrate and image were captured with CCD camera.