

Anti-PGR5-like protein 1A, chloroplastic antibody

Catalog: PHY0341

Product Information

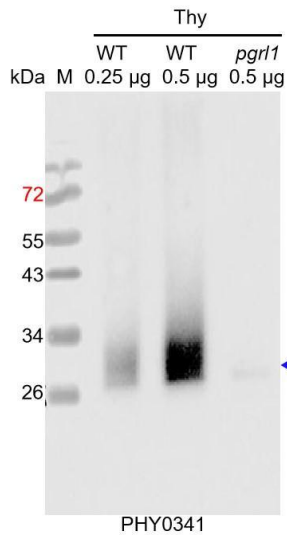
Description:	Rabbit polyclonal antibody
Background:	In higher plants, cyclic electron flow (CEF) around photosystem I contains two pathways, NDH-dependent and PGR5/PGRL1-dependent pathway. PGR5-like protein 1 (PGRL1) is one of the component that is essential for cyclic electron flow (CEF) around Photosystem I.
Synonyms:	PGRL1A
Immunogen:	Recombinant protein (1-324aa) derived from <i>Arabidopsis thaliana</i> PGRL1A (AT4G22890).
Form:	Lyophilized
Quantity:	150 µg
Purification:	Protein A purified
Reconstitution:	Reconstitution with 150 µl of 0.01 M sterile PBS. "Note: please spin tube briefly prior to opening it to avoid any losses that might occur from lyophilized material adhering to the cap or sides of the tube".
Stability & Storage:	Use a manual defrost freezer and avoid repeated freeze-thaw cycles. 12 months from date of receipt, -20 to -70°C as supplied. 6 months, -20 to -70°C under sterile conditions after reconstitution. 1 month, 2 to 8°C under sterile conditions after reconstitution.
Shipping:	The product is shipped at 4°C. Upon receipt, store it immediately at the temperature recommended above.

Application Information

Recommended Dilution:	Western Blot (1:1000-1:2000) Note: Optimal dilutions/concentrations should be determined by the end user.
Expected / apparent MW:	36 / 28 kDa
Confirmed Reactivity:	<i>Arabidopsis thaliana</i>
Predicted Reactivity:	For more species homologues information, please contact tech support at tech@phytoab.com .

Research Use Only

Application Example



Thy-WT: thylakoid membrane protein from WT of *Arabidopsis thaliana* leaf containing 0.25 µg and 0.5 µg of chlorophyll, respectively.

Thy-*pgr1*: thylakoid membrane protein from an *ndh* mutant of *Arabidopsis thaliana* containing 0.5 µg of chlorophyll.

Electrophoresis: 15% SDS-Urea-PAGE

Transfer: blotting to NC (nitrocellulose) membrane for 1 h.

Blocking: 5% skim milk at RT or 4°C for 1 h.

Primary antibody: 1:1000 dilution overnight at 4°C.

Secondary antibody: 1:20000 dilution using Goat Anti-Rabbit IgG H&L(HRP) (Cat# PHY6000).

Detection: using chemiluminescence substrate and image were captured with CCD camera.